

TECHSOFT



**SolidWorks Education Edition 2009-2010
Installation Instructions**

This guide is intended only to assist the reader with installation of SolidWorks 2009-10 Education Edition. TechSoft UK Limited shall not be liable for any loss or damage whatsoever arising from the use of any information or particulars, or any error or omission, in this guide.

Trademark acknowledgments:

SolidWorks is a trademark of SolidWorks Corporation

RM CC3 and CC4 Network is a trademark of RM Education plc

Windows is a trademark of Microsoft Corporation

Printed: Nov 2009

CONTENTS

Introduction	2
Preparation.....	3
Stand Alone Installation.....	5
Network Installation.....	10
Step 1 - Obtaining a License File	11
Step 2 - Installing the SolidWorks Network License Software.....	15
Step 3 - Installing SolidWorks on Client Computers	22
Method 1 - Install from DVD	22
Method 2 - Create a One Step Installer and install from this.....	27
Notes for RM CC Network Users	32
Further Notes and Troubleshooting.....	42

INTRODUCTION

This booklet has been written to assist users when installing SolidWorks Education Edition 2009-10. The installation should be straightforward on most systems. However sometimes problems can arise, either through system issues, licensing issues, network issues, user error, etc. These problems may vary depending on whether it is a new installation or an upgrade. In our experience it is much simpler and quicker to avoid the problems in the first place, rather than to try to sort them out if things have gone wrong. Hence, the reason for this booklet.

TechSoft strongly advise users to read through these notes, and to follow them carefully when installing the software. This should minimise the chances of any problems occurring.

Additional information is available on the SolidWorks website, www.solidworks.com. Some of the more popular links can be found at www.techsoft.co.uk/swresourcelinks.htm (or go to www.techsoft.co.uk, then choose *SOFTWARE > SolidWorks > Customer Support*).

The following names of products have changed from SolidWorks 2008 to SolidWorks 2009:

SolidWorks 2008	SolidWorks 2009
SolidWorks 3D MCAD Software	SolidWorks® Standard
SolidWorks Office Professional	SolidWorks® Professional
SolidWorks Office Premium	SolidWorks® Premium
PDMWorks® Enterprise	SolidWorks® Enterprise PDM
PDMWorks Workgroup	SolidWorks® Workgroup PDM
COSMOS	SolidWorks® Simulation
COSMOS FloXpress	SolidWorks® FloXpress
COSMOSFloWorks	SolidWorks® Flow Simulation
COSMOSMotion	SolidWorks® Motion
COSMOSWorks Designer	SolidWorks® Simulation
COSMOSWorks Professional	SolidWorks® Simulation Professional
COSMOSWorks Advanced Professional	SolidWorks® Simulation Premium
COSMOSM	SolidWorks® Simulation Premium
COSMOSXpress	SolidWorks® SimulationXpress
DWGseries	SolidWorks® DWGseries
eDrawings	SolidWorks® eDrawings®
eDrawings Professional	SolidWorks® eDrawings® Professional

NEW FEATURES

Details of the new features available in SolidWorks 2009 can be found at <http://www.solidworkslaunch.com>

PREPARATION

1. Verify that your system meets the criteria specified at www.solidworks.com/System_Requirements. In particular note that the minimum RAM requirement is 1Gb. Although the software can be installed and run on a computer with less RAM than this, it is likely to run too slowly to be practical.
2. Locate your Serial Number (S/N). The number typically begins with 9710 (Network) or 9700/9701 (Stand Alone).

For New Users:

The serial number is located on the front of the box on a sticker and/or on your invoice/delivery note.

For Existing Users:

The serial number can be found from within SolidWorks by choosing *Help > About SolidWorks*. It can also be located on the front of the original box on a sticker, and/or on your original invoice/delivery note.

3. *Existing Users Only:*

Back up all SolidWorks files (parts, assemblies, and drawings, document templates, sheet formats, library features, and form tools) before upgrading to SolidWorks 2009. Files you open and save in SolidWorks 2009 cannot be opened in earlier versions.

4. *Existing Users Only:*

Choose whether to Upgrade or to Un-install, Clean-up and Re-install

Whilst upgrading an existing installation is the most straightforward to implement, please be aware that many files from the old version will still reside on the computer after installation.

In order to minimise disk space, you should consider uninstalling your older Education Edition, cleaning up, then using a new installation of SolidWorks 2009-10 Education Edition. If you do choose this approach you will need to note the following:

- a. Before uninstalling any stand-alone copy of SolidWorks, you should transfer your license by choosing *Help > Transfer Licenses...* from within SolidWorks.
 - b. After uninstalling the main SolidWorks program, you should also uninstall all COSMOS products, along with older versions of eDrawings, DWGEditor, etc.
 - c. For a complete “clean-up”, the old registry keys will need to be deleted. Full details of how to do this can be found at http://www.solidworks.com/sw/support/Tech_Tips/TT_CleanUpdate.html. If the old registry keys are left in place, SolidWorks will default to the old folders for *File Locations* and *Default Templates* (this is so that users do not think that they have “lost” their old work). These folder locations can subsequently be changed from within SolidWorks using *Tools > Options*, but unless the user is made aware this, some confusion can result where old files are in the SolidWorks 2008 folder and new files are in the SolidWorks 2009 folder.
5. Administrative rights are necessary on the local system in order to perform SolidWorks installation or upgrades.
 6. Most anti-virus applications are compatible with SolidWorks software and will not block its installation. However, a few are not, and these will need to be disabled before SolidWorks is installed. For a list of anti-virus products that have been tested for compatibility with SolidWorks installation and

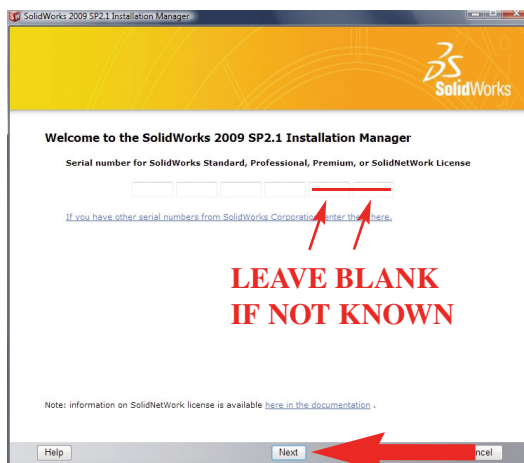
usage, please see http://www.solidworks.com/sw/support/AntiVirus_SW.html

7. Installation of SolidWorks can be done whether the computer is connected to the Internet or not. However, many of the processes are automated if a live internet connection is available, so this is strongly recommended.
8. SolidWorks includes a library of standard hole types and hardware. By default the library will be installed into C:\SolidWorks Data. If you are doing a network installation you should consider placing the library on a network share so that further upgrades, installations or additions to the library only need to be done once on the shared folder. This can also be done when setting options for an administrative image.

STAND ALONE INSTALLATION

Installation of SolidWorks can be done whether the computer is connected to the Internet or not. However, many of the processes are automated if a live internet connection is available, so this is strongly recommended.

1. If you are an existing user, start up your current software and, after noting down your serial number (see page 3, note 2), choose *Help > Transfer License* before upgrading or uninstalling (see page 3, note 4). This ensures that the number of activations is not exceeded.
2. Insert the SolidWorks 2009 DVD into your DVD drive. If the software does not start up automatically, choose *My Computer* and click on the appropriate drive.
3. A Welcome Screen will appear.



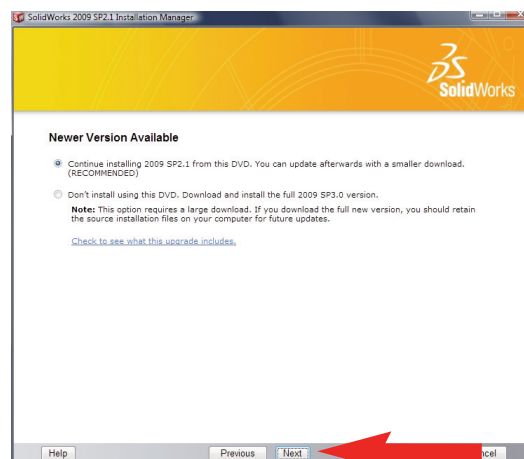
Note:

If you receive an error message about your serial number, refer to Serial Number Errors on page 42.

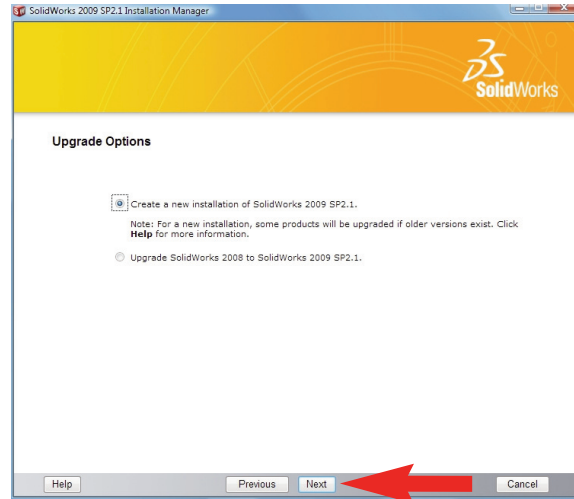
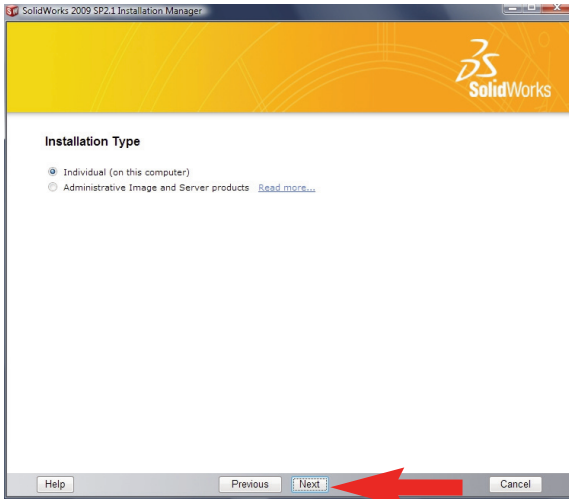
For a new installation enter your serial number (just 16 digits, ignore the last two boxes); for existing users the serial number may already be there. Click *Next*.

If you have only entered a 16 digit serial number, the last 8 digits will be automatically generated and then presented to you. You should record the full 24 digit serial number then click *Next*.

4. If a later version of the software has been detected over the internet, you will be given the opportunity to *Download and install a new version*. As SolidWorks is such a large piece of software, you are **STRONGLY ADVISED NOT TO DOWNLOAD**, as download times for the full program can take many hours. Choose *Continue installing SolidWorks 2009 SP2.1* (the default) then click *Next*.



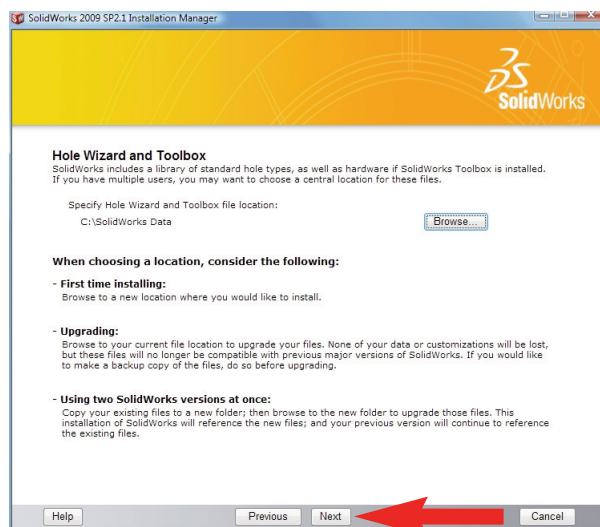
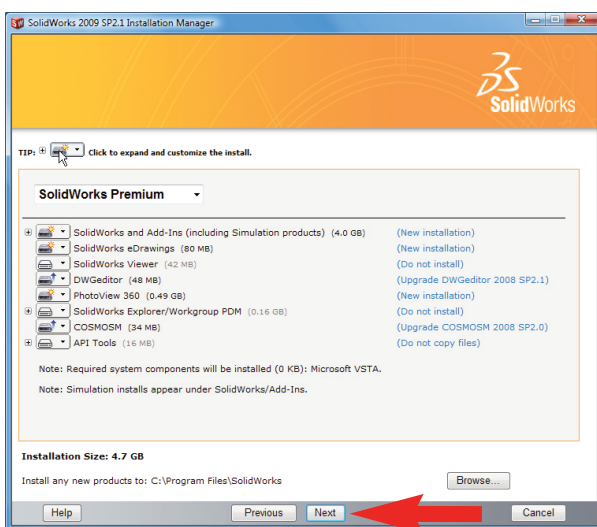
- The SolidWorks Setup Wizard will guide you through the installation. Choose *Individual* for the Installation Type and click *Next*. If applicable, choose your 'Upgrade Option' (see page 3, note 4) and click *Next* to continue.



- Accept the default settings on the following screen (if you do not have a live internet connection, you must ensure that **SolidWorks Premium** is first selected then add **COSMOSM**), click *Next*.

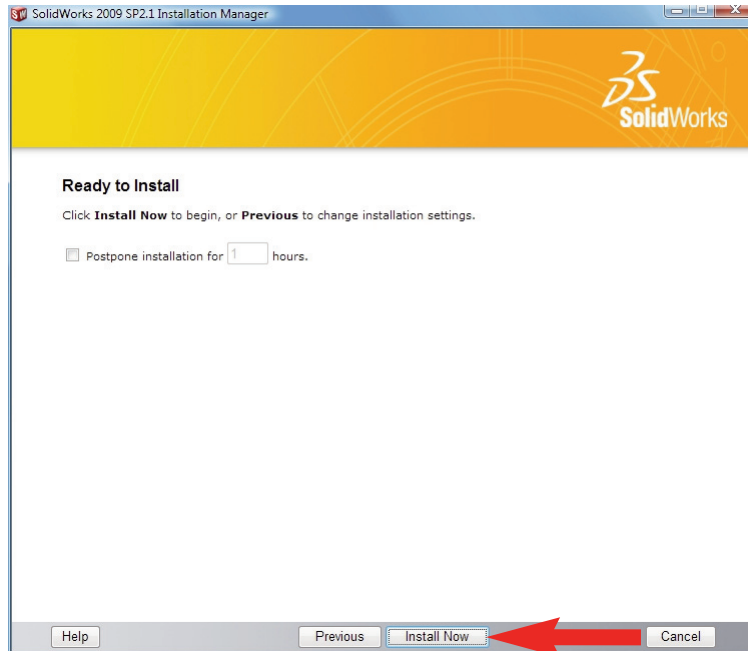
When the prompt asks you where you would like to put *Hole Wizard and Toolbox Files*, consider the options available, further information is available by clicking on help. New users can accept the default *C:\SolidWorks Data* or choose another location if preferred. If you are an existing customer and would like to upgrade your current folder that contains the standard library files (SolidWorks Toolbox, etc), click *Browse* and find the folder with your existing standard library files then click *OK*. Existing customers can also choose to install new Hole Wizard and Toolbox Files if preferred by Browsing to a new or empty folder.

After choosing your folder, click *Next*.

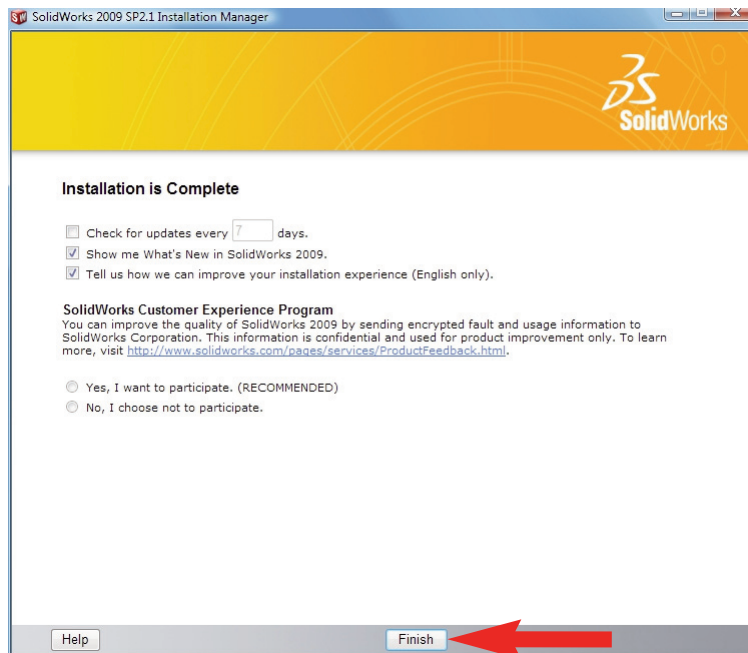


7. Ready to Install, click *Install Now*

There are a number of error messages that may appear during installation, depending on your choices and currently installed software. Please refer to the Troubleshooting section at the end of this book if further information is needed.



8. Installation is Complete. Click *Finish*.

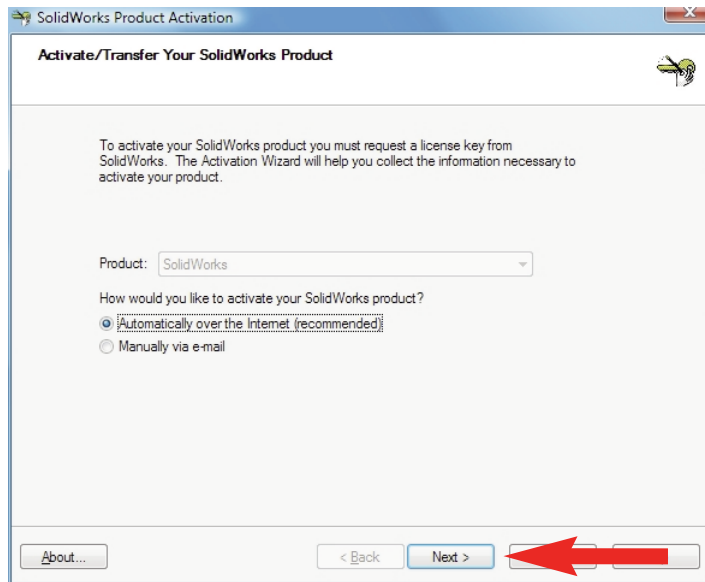


N.B. Depending on your computer configuration you may or may not need to restart your computer.

- When you start SolidWorks Education Edition for the first time, SolidWorks Product Activation prompt will show. Click *Next* to continue.



- To activate your SolidWorks product you must request a license key from SolidWorks. This can be done automatically by choosing *Automatically over the Internet (recommended)*, or if the computer on which you are installing the software is not connected to the Internet, it can be done manually via e-mail.



11. Fill in the appropriate fields then click *Next*.

Contact Information

* Required fields

Company name *

First Name * Last Name *

Email * Location of use * Office

Phone * Title * Owner/Partner/President

Shipping address *

City/Town * Country/Region * United Kingdom

ZIP/Postal Code * State/Country *

What products do you design?

What industry best describes your company?

What is your primary responsibility?

Before SolidWorks, what was your primary CAD package?

12. You have now registered your SolidWorks Education Edition. Click *Finish*.

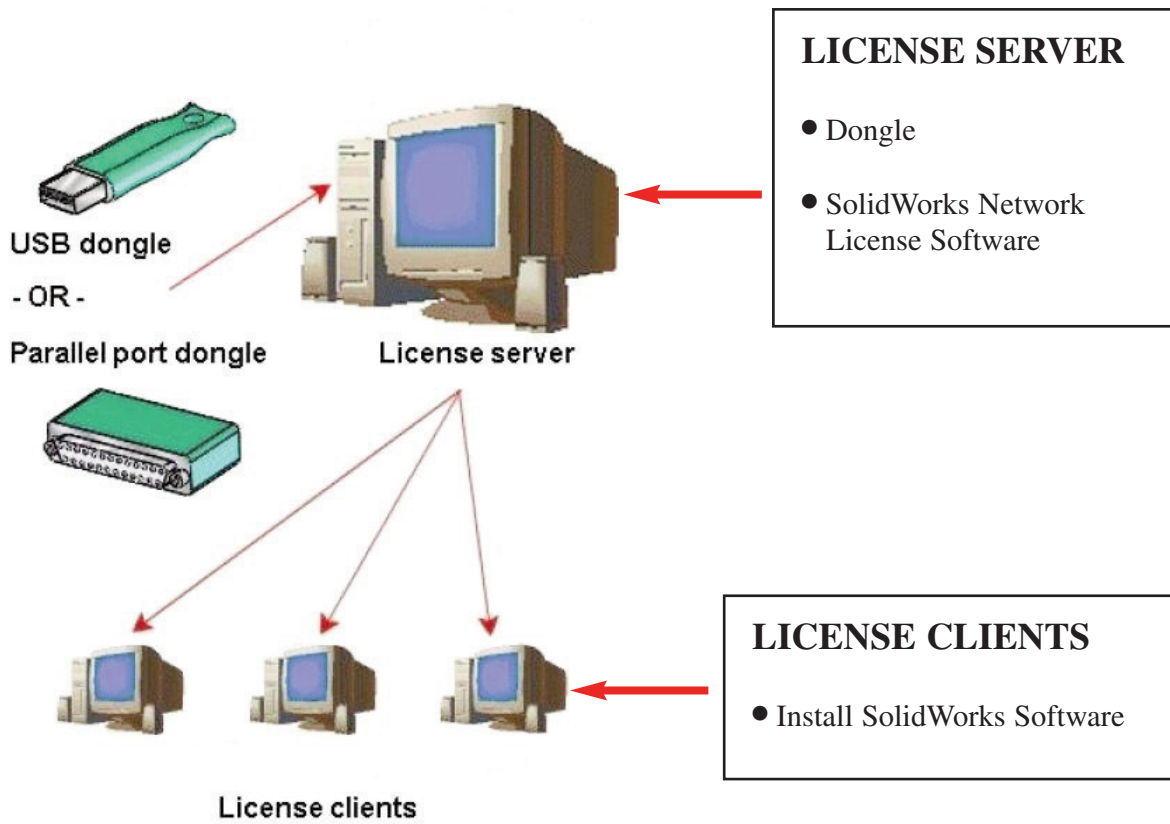
Activation/Reactivation Succeeded.

Currently activated products:

Product	Expiry
SolidWorks Premium	Never
SolidWorks Simulation Premium	Never
SolidWorks Flow Simulation	Never

NETWORK INSTALLATION

The general procedure is to first install the SolidWorks Network License software (SolidNetWork License Manager) and the dongle on the license server, then to install SolidWorks on each of the client computers.



Step 1 - Obtaining a License File

1. Go to **www.solidworks.com** and then click *login*.
2. Once you are in the page headed “Logins for SolidWorks Communities”, click *SolidWorks Customer Portal*. This will direct you to the sign-in page for the customer portal.
3. If you already have an account, enter your email address and password then proceed to step 7. To create a new account, once you are in the sign-in page, on the right side of the page, click on *Click here* to create a Sign-In account.



Welcome to the SolidWorks Customer Portal

Already a member?

Sign-in using your email address and password

Language: English ▾

email Address:

Password:

Remember Me

Not a member?

[Learn about the benefits of joining](#)

To create an account, [click here](#)



[Forgot your password?](#)

©2009 Dassault Systèmes SolidWorks Corp.
[Terms of Use](#) [Privacy Policy](#) [Piracy Prevention](#)

4. Enter your serial number in the box and click *Next* at the bottom of the page.

Logout | SolidWorks Websites | English ▾ | Help

Customer Portal

HOME MY SUPPORT REFERENCES FORUMS COMMUNITY

CP Registration - Check Serial Number:

[Check Serial Number](#)

Please supply a serial number below and click "Next". If you do not have a serial number, please click the button labeled "I don't have a serial number at this time".

Serial Number:



When navigating through your account creation, please use the navigation buttons on the page. Using your standard browser navigation buttons will impact your ability to complete the account creation process successfully.

- After you have completed filling out your Serial Number, you will then be asked to verify your information. After you have verified, click *Yes, this information is accurate*.

Logout | SolidWorks Websites | English | Help

Customer Portal

HOME MY SUPPORT REFERENCES FORUMS COMMUNITY

CP Registration - Validate Account Info:

Validate Account Info

According to our records, the displayed information is what has been entered as the company associated to the serial number you have supplied. Is this information accurate?

Account Name: Solidworks Internal Access Activations

Address Line 1: 300 Baker Ave

Address Line 2 (if applicable):

Address Line 3 (if applicable):

City: Concord

State: MA

Zip: 01742-2131

Country: USA

When navigating through your account creation, please use the navigation buttons on the page. Using your standard browser navigation buttons will impact your ability to complete the account creation process successfully.

- Next, type in your email address in the box and click *Next*. Fill in the appropriate fields asked in the next step. (N.B. You will not be able to move forward if you have not completed the required fields which are indicated with a red asterisk.)

Logout | SolidWorks Websites | English | Help

Customer Portal

HOME MY SUPPORT REFERENCES FORUMS COMMUNITY

CP Registration - Check Email Address:

Check Email Address

Please provide us with your e-mail address.

**Please note that this e-mail address will be where licensing information, as well as any communication that is done through your SolidWorks Customer Portal account will be sent.

***Email Address:**

When navigating through your account creation, please use the navigation buttons on the page. Using your standard browser navigation buttons will impact your ability to complete the account creation process successfully.

- You have successfully signed in to the Customer Portal. In order for Full Access to the portal, you must Register your Products. Under *My Support*, click *Register My Products*.

The screenshot shows the SolidWorks Customer Portal interface. At the top, there is a navigation bar with 'Logout', 'SolidWorks Websites', a language dropdown set to 'English', and a 'Help' button. Below this is a search bar. The main navigation menu includes 'HOME', 'MY SUPPORT', 'REFERENCES', 'FORUMS', and 'COMMUNITY'. A welcome message for 'Johnny Kim' is displayed. On the left, there are 'Quick Links' (Open SR's, My Profile, Contact Us) and 'Links' (About Technical Support, SolidWorks World 2008, One Minute Tech Tips, Offers from our Partners, SolidWorks Demos). The 'Self-Service' section is highlighted, containing three main areas: 'My Support' (Knowledge Base, Enhancement Requests, Review SR's, Fixed SPR list, API Support, My Products, Register My Products), 'Download' (Downloads and Updates, 3D Content Central, SolidWorks Labs, API examples, Educator Resources), and 'References' (System Requirements, Hardware and Graphics, Registration and Activation, Admin Guides, Documentation Central, Tech Tips & Presentations, Webinars, Training). A red arrow points from the 'Register My Products' link in the 'My Support' section to the right. On the right side, there are sections for 'SolidWorks News', 'Popular Solutions', and a search bar.

- After you click *Register My Product*, you will have to enter your SolidWorks Serial Number in the box. (The number typically begins with 9710 and is located on the front of the box on a sticker and/or your invoice/delivery note. If you cannot find, or you have misplaced your number, please contact TechSoft.) Then click *Next*.

The screenshot shows the 'Welcome to the SolidWorks eRegistration' form. At the top, there is a navigation bar with 'Logout', 'SolidWorks Websites', a language dropdown set to 'English', and a 'Help' button. Below this is a search bar. The main navigation menu includes 'HOME', 'MY SUPPORT', 'REFERENCES', 'FORUMS', and 'COMMUNITY'. The form contains the following text: '* Indicates required field. Welcome to the SolidWorks eRegistration. Please enter the serial number for the product you would like to register.' Below this is a text input field labeled '*Serial Number:'. At the bottom of the form, there are two buttons: 'Next' and 'Cancel'. A red arrow points from the left towards the 'Next' button.

- Once you have entered your serial number, you will then be asked what version you have. Click the icon next to the box to find your version and then click *Next*.



- The SolidWorks Network License File (.txt) will be emailed to you. You should receive this file in a few minutes. (Note: SAVE THE NETWORK LICENSE FILE TO YOUR HARD DRIVE. You will need this in Step 2.) Click *Next*.



Step 2 - Installing the SolidWorks Network License Software

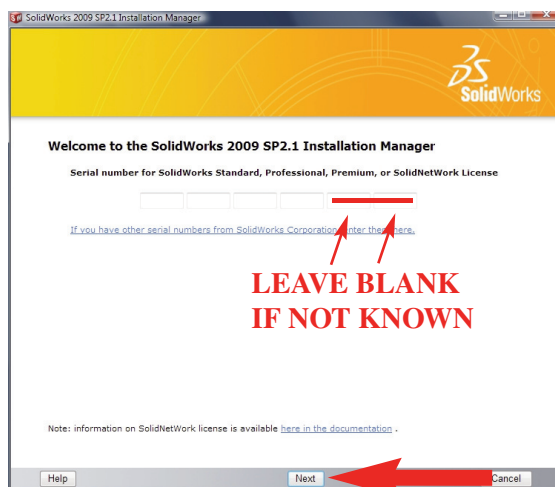
You must assign one computer (usually a server) to be your SolidWorks License Server. On this you must install the SolidWorks Network License software (SolidNetWork License Manager) as follows:

Note:

- All previous License Managers must be removed from your computer before beginning the installation of the new License Manager (ie., 2008 must be removed before installing 2009).
- The License Manager must be installed on the machine that will be used to distribute SolidWorks licenses on your network.
- Your dongle (hardware lock) must be inserted on the machine where you will install your License Manager and not any other machine.
- The License Manager for 2009 will license both SolidWorks and SimulationXpress (formerly COSMOS) products. In addition it will license SolidWorks 2008 based EDU products. Older versions of SimulationXpress will require the older SimulationXpress only License Manager.

N.B. Always install the SolidWorks Network License Software and dongle driver software DIRECTLY on the server. Installing it using a remote desktop application such as Remote Desktop Connection, VNC, Symantec pcAnywhere, has been found to cause problems in most cases.

1. If you have a PARALLEL SolidWorks dongle, fit it now. If you have a USB SolidWorks dongle, and are installing SolidWorks for the first time, do not fit the dongle until instructed to do so.
2. Insert the SolidWorks 2009 DVD into your DVD drive. If the software does not start up automatically, choose *My Computer* and click on the appropriate drive.
3. A Welcome Screen will appear. For a new installation enter your serial number (just 16 digits, ignore the last two boxes); for existing users the serial number should already be there. Click *Next*.

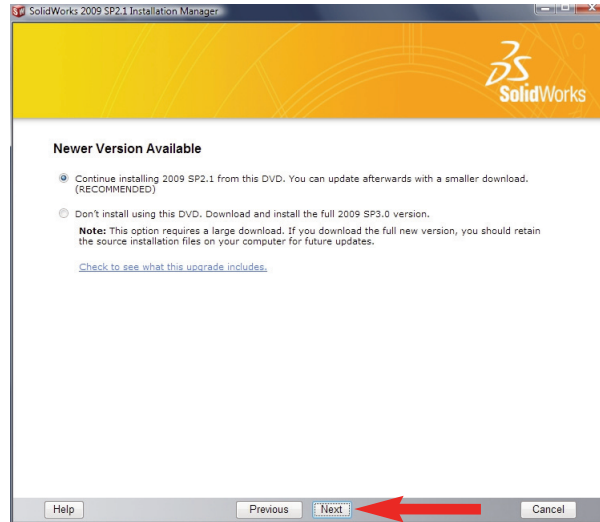


Note:

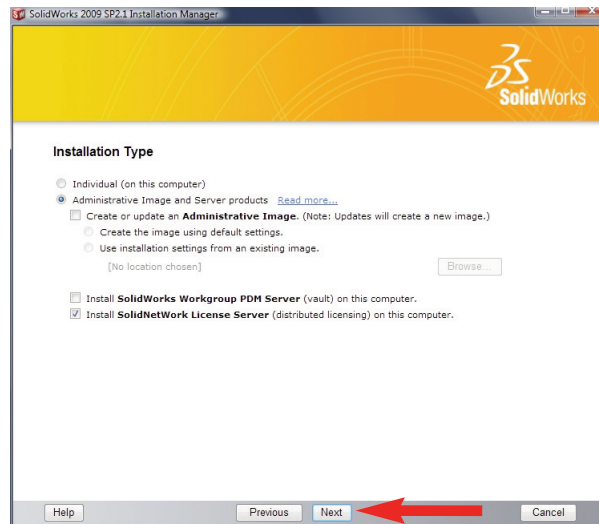
If you receive an error message about your serial number, refer to Serial Number Errors on page 42.

If you have only entered a 16 digit serial number, the last 8 digits will be automatically generated and then presented to you. You should record the full 24 digit serial number then click *Next*.

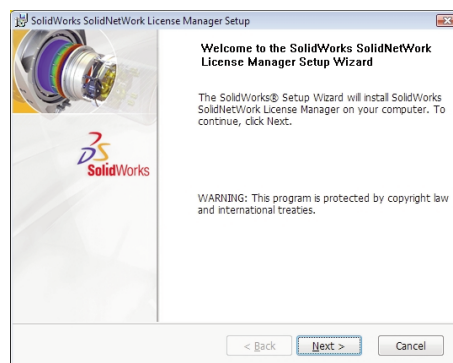
4. If a later version of the software has been detected over the internet, you will also be given the opportunity to *Download and install a new version*. As SolidWorks is such a large piece of software, you are **STRONGLY ADVISED NOT TO DOWNLOAD**, as download times for the full program can take many hours. Choose *Continue installing SolidWorks 2009 SP2.1* (the default), then click *Next*.



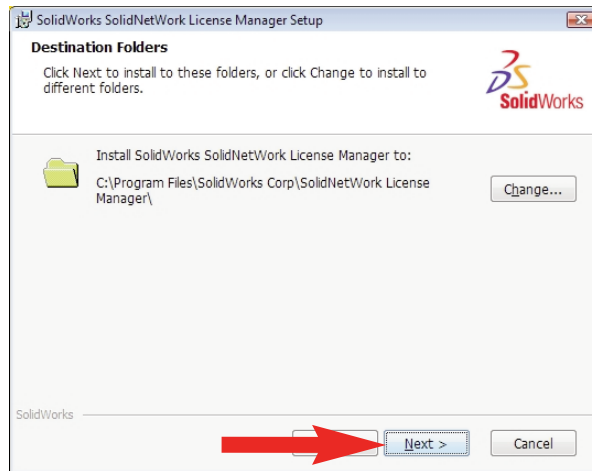
5. You will be asked to choose what you would like to install. Choose *Administrative Image and Server Products*, then **ONLY** have *Install SolidNetWork License Server* ticked. Click *Next*.



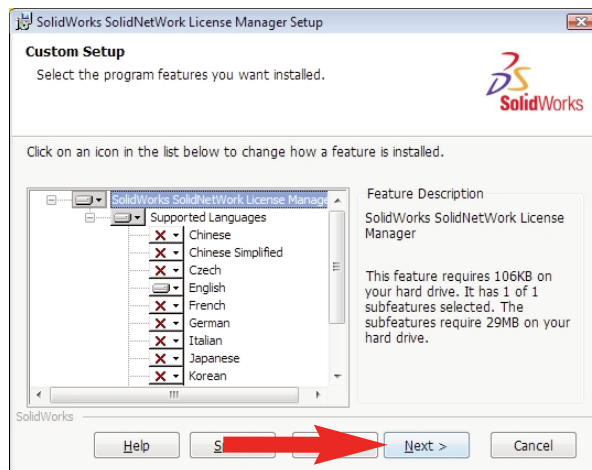
6. You are now ready to install the SolidNetWork License Manager, Click *Next*.



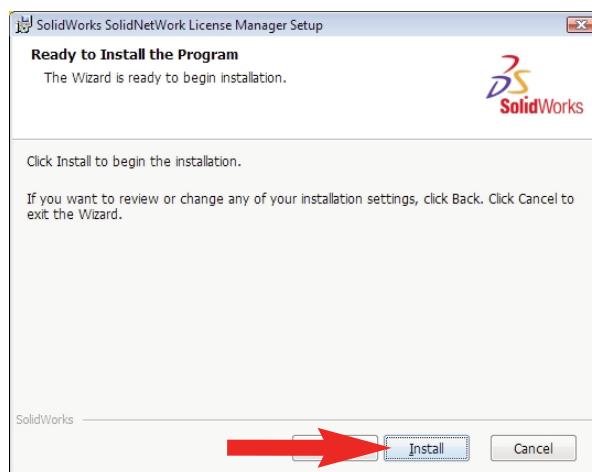
7. You will be asked where you want the files to be installed. After you choose, click *Next*.



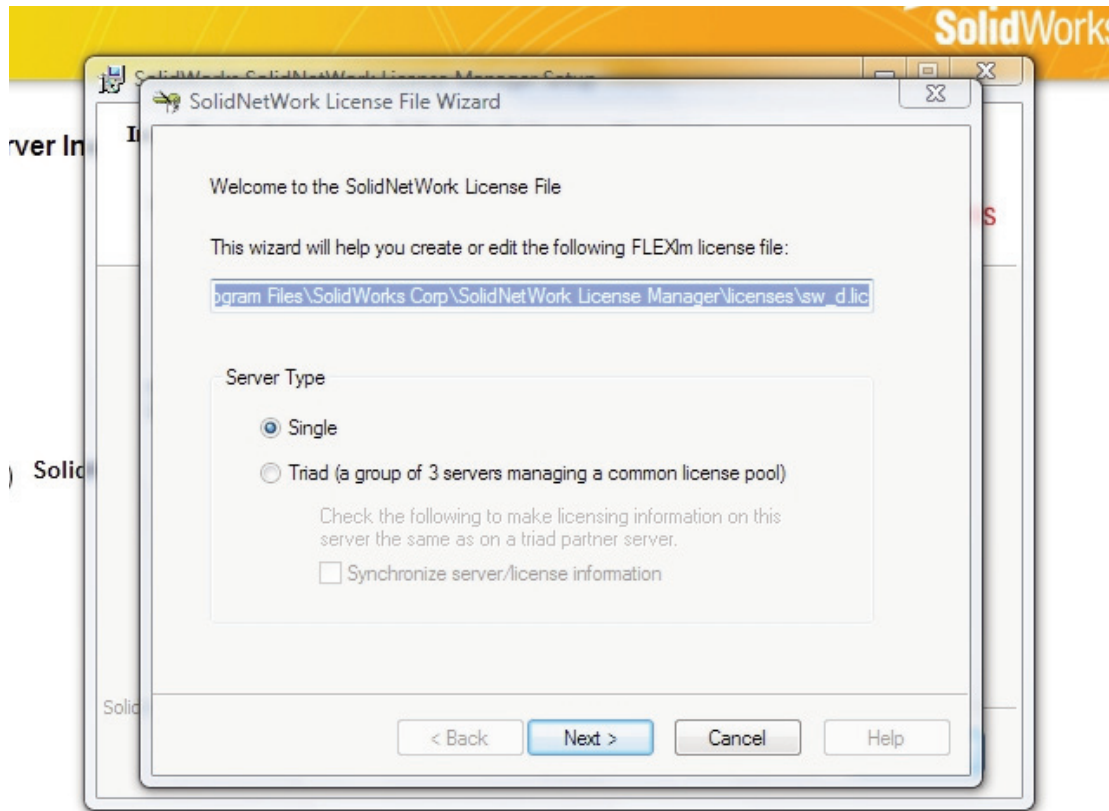
8. You will next be asked what language you want as your default. After you choose your language, click *Next*.



9. Now you are ready to begin the installation. Click *Install* to proceed.



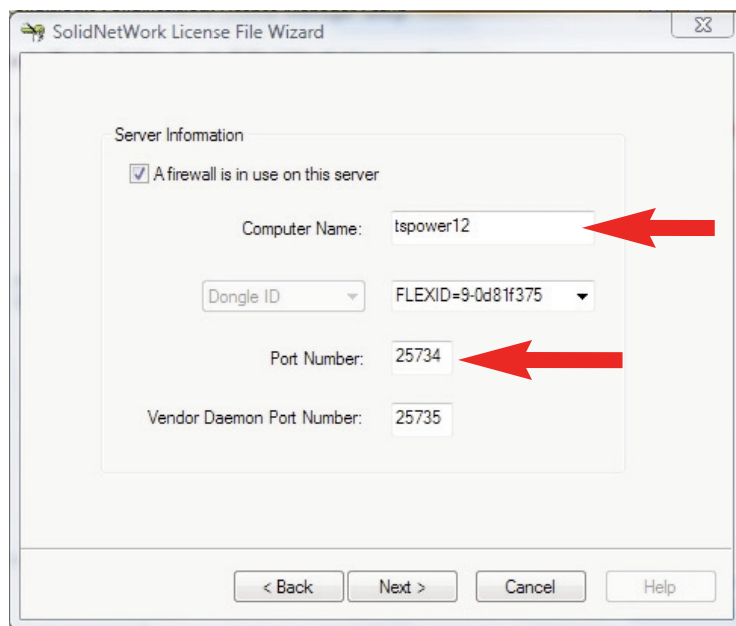
- To continue the installation, DO NOT change the location where *The wizard will help you create or edit the FLEXlm license file.* Keep the server type at *Single*, and then click *Next*.



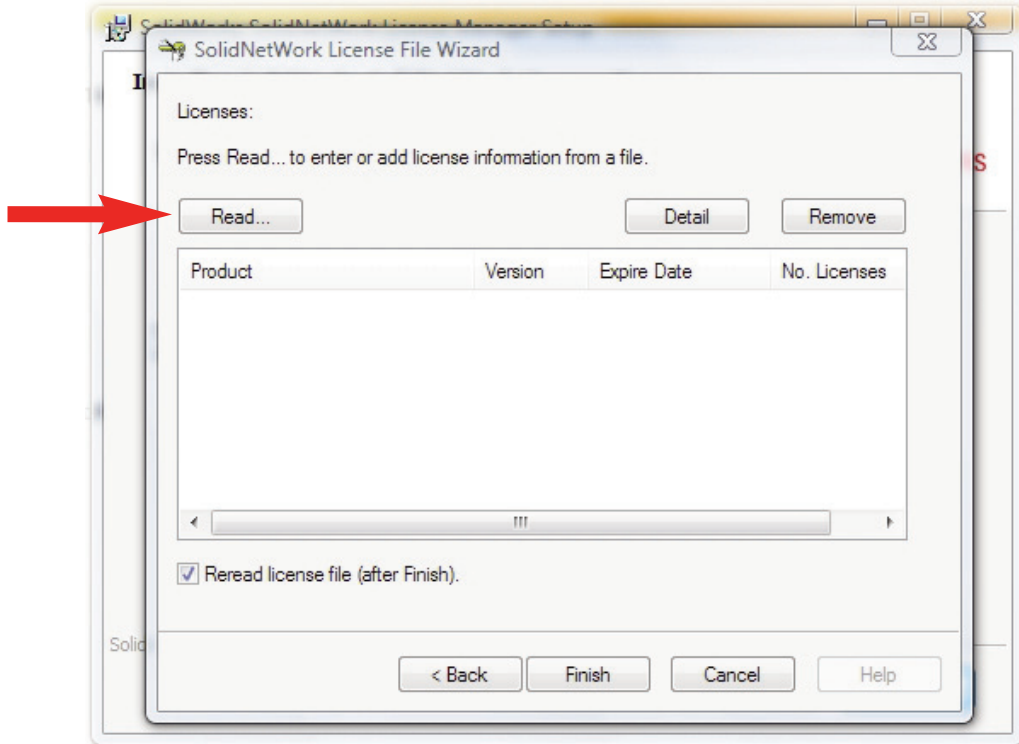
- In this step of the installation, you will be given your server information. **PLEASE NOTE the Computer Name and Port Number.** (You will need the Computer Name and Port Number in Step 3.) Once you have written down your Computer Name and Port Number, click Next.

Note:

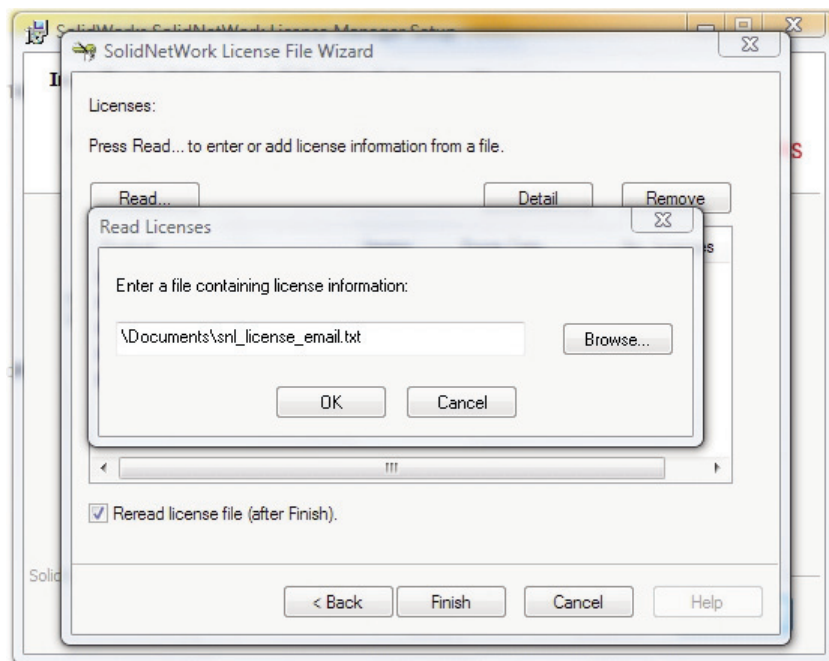
The firewall option refers to a software firewall such as 'Windows Firewall'. It is highly likely that your server will have some form of software firewall enabled. **Please tick this option and see the notes on page 43 about Network Licenses with Firewalls.**



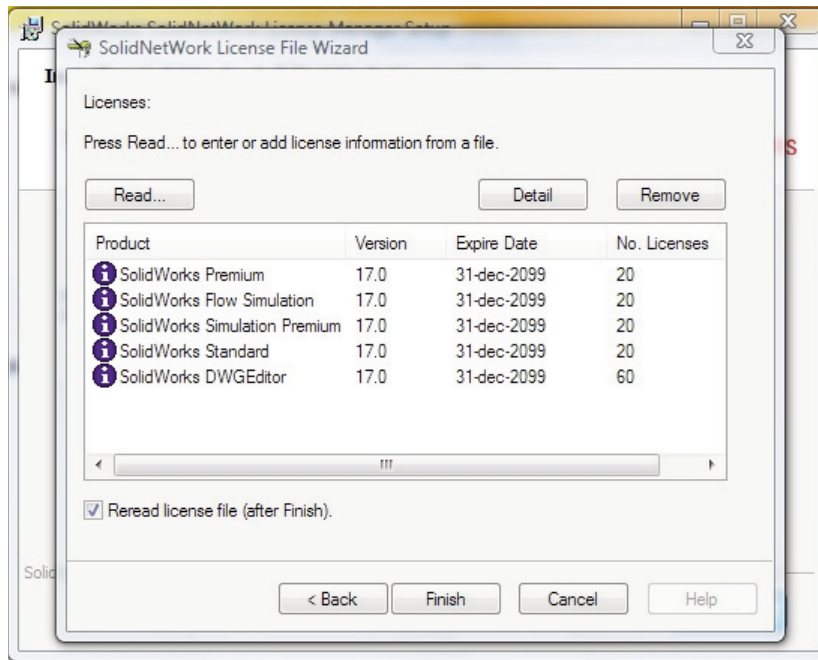
- You will now have to insert your SolidWorks Network License File that you obtained during Step 1. (You were given a Network License File (.txt) during Step 1. This file was placed on your hard drive.) Click *Read* to insert your Network License File.



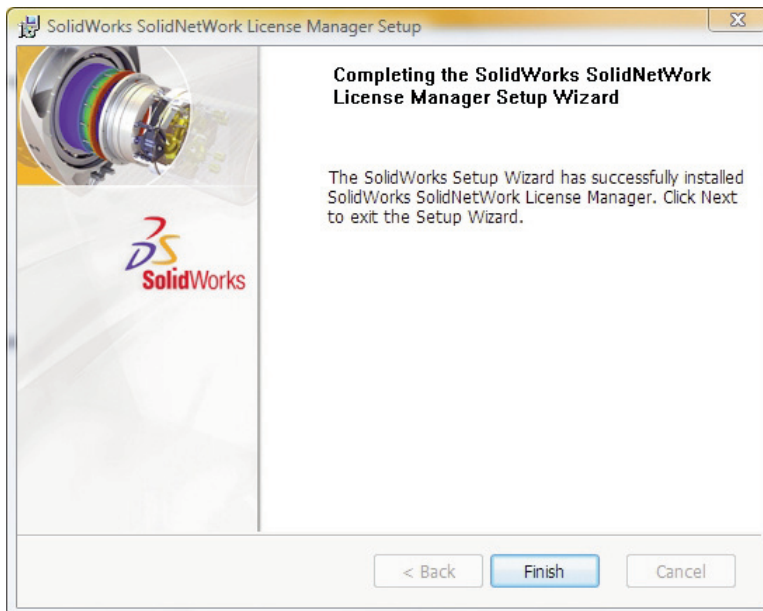
- Click *Browse* and locate the Network License File that you have copied to your hard drive. Once you have located your Network License File, click *OK*.



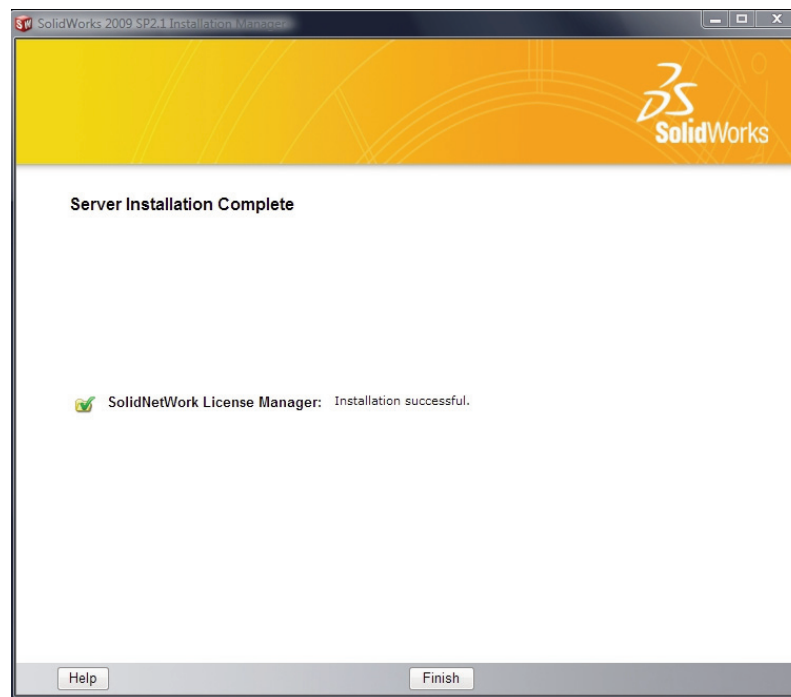
14. Your Network License information will show up on the screen. Once you have looked over your information, click *Finish*.



15. You are now finished installing the SolidWorks SolidNetWork License Manager. Click *Finish*.



16. Click *Finish* to conclude the installation of the SolidNetWork License Manager.



Step 3 - Installing the SolidWorks Software on each Client Computer

There are now two ways to proceed. You can either simply install SolidWorks on each computer from the DVD, or you can create a one-step installer (administrative image) on the server and allow each client computer to use this to install from.

Method 1 - Install from DVD

This must be done on each computer that you wish to run SolidWorks on.

1. Insert the SolidWorks 2009 DVD into your DVD drive. If the software does not start up automatically, choose *My Computer* and click on the appropriate drive.
2. A Welcome Screen will appear.



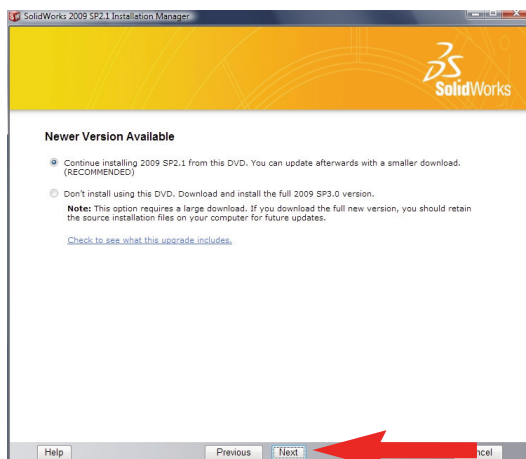
Note:

If you receive an error message about your serial number, refer to Serial Number Errors on page 42.

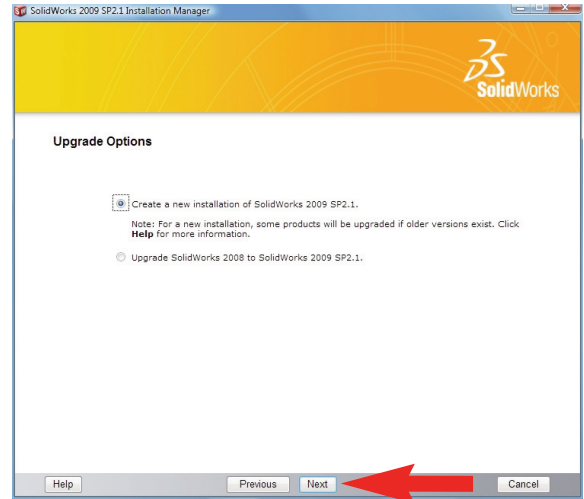
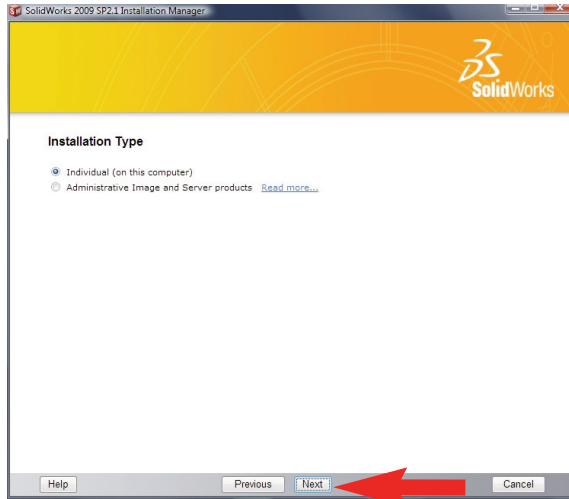
For a new installation enter your serial number (just 16 digits, ignore the last two boxes); for existing users the serial number may already be there. Click *Next*.

If you have only entered a 16 digit serial number, the last 8 digits will be automatically generated and then presented to you. You should record the full 24 digit serial number then click *Next*.

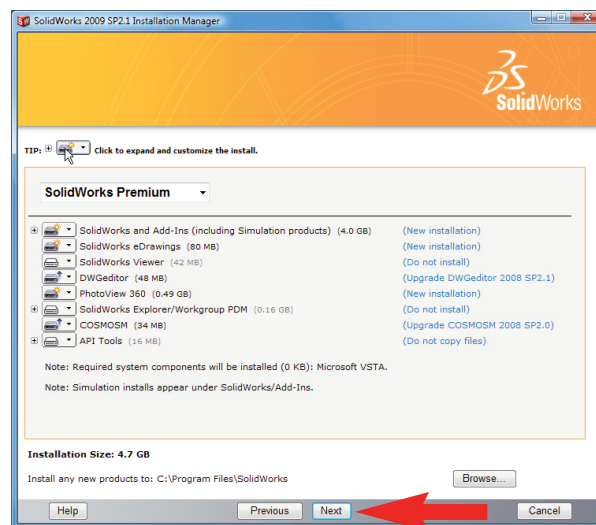
3. If a later version of the software has been detected over the internet, you will be given the opportunity to *Download and install a new version*. As SolidWorks is such a large piece of software, you are **STRONGLY ADVISED NOT TO DOWNLOAD**, as download times for the full program can take many hours. Choose *Continue installing SolidWorks 2009 SP2.1* (the default) then click *Next*.



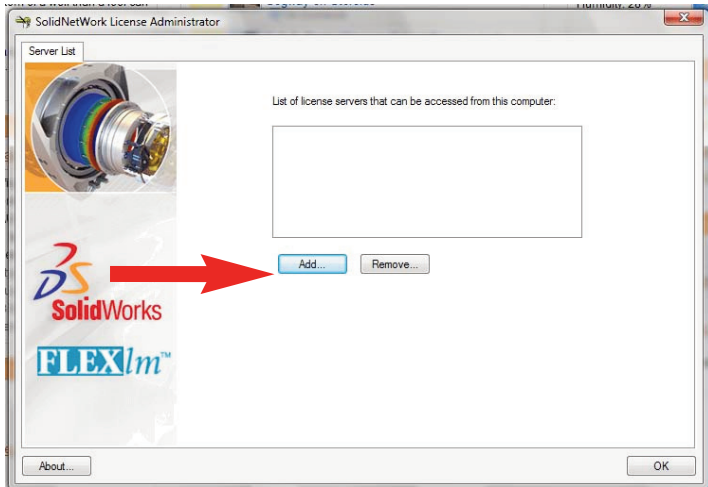
- The SolidWorks Setup Wizard will guide you through the installation. Choose *Individual* for the Installation Type and click *Next*. If applicable, choose your 'Upgrade Option' (see page 3, note 4) and click *Next* to continue.



- Accept the default settings on the following screen (if you do not have a live internet connection, you must ensure that **SolidWorks Premium** is first selected then add **COSMOSM**), click *Next*.



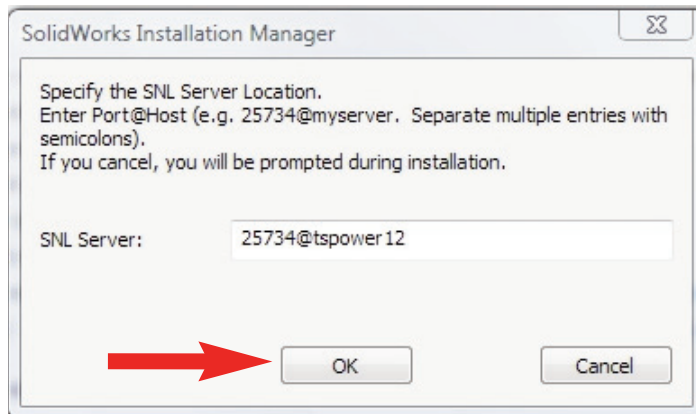
- 6a. If you are presented with the following screen (if the computer you have installed SolidWorks on is not the license server). Click *Add*.



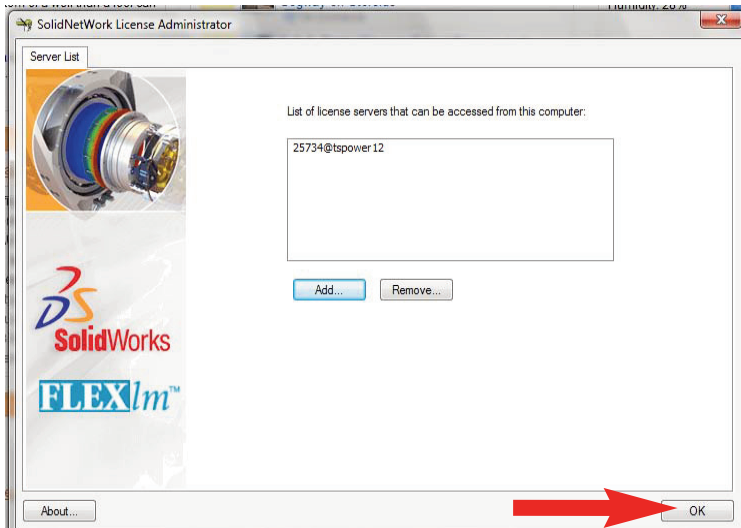
NOTE:

If you are installing as an upgrade to an existing installation of SolidWorks, it is possible that the server name will already be included in the dialog box

- b. Enter your license server and the port number that you specified in step 2-9, page 18. The default port is 25734. Enter it as portNumber@computerName. Then click *OK*.

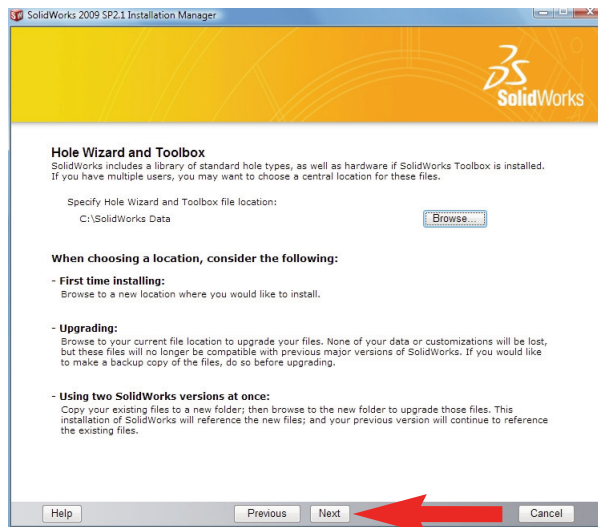


- c. You should now see your license server listed in License administrator. Click *OK*.



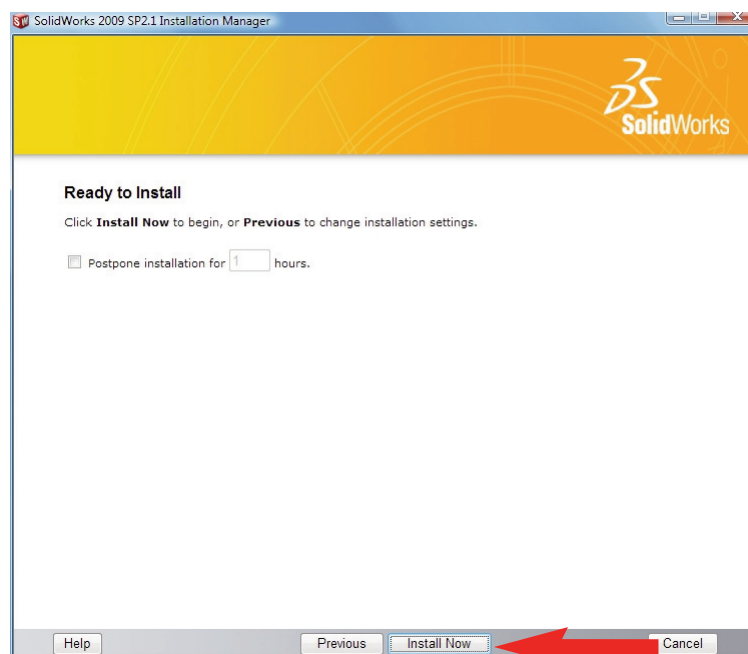
- When the prompt asks you where you would like to put *Hole Wizard and Toolbox Files*, consider the options available, further information is available by clicking on help. New users can accept the default C:\SolidWorks Data or choose another location if preferred. If you are an existing customer and would like to upgrade your current folder that contains the standard library files (SolidWorks Toolbox, etc), click Browse and find the folder with your existing standard library files then click OK. Existing customers can also choose to install new Hole Wizard and Toolbox Files if preferred by Browsing to a new or empty folder.

After choosing your folder, click *Next*.

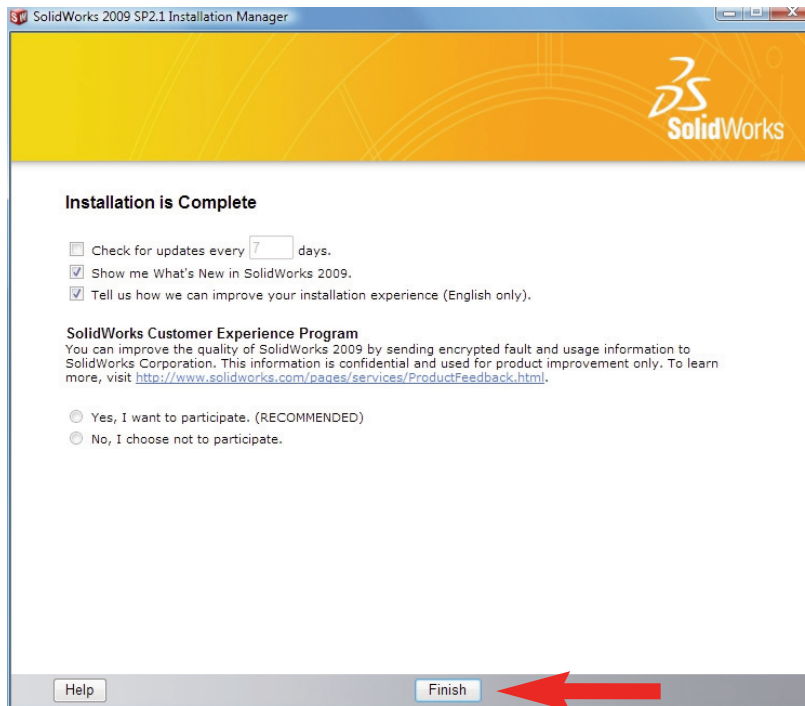


- Ready to Install**, click *Install Now*.

There are a number of error messages that may appear during installation, depending on your choices and currently installed software. Please refer to the Troubleshooting section at the end of this book if further information is needed.



8. **Installation is Complete.** Click *Finish*.



N.B. Depending upon your computer configuration you may or may not need to restart your computer.

Method 2 - Create a One-Step Installer and install from this

You create a One-Step installer (administrative image) on the server and then allow each client to use this to install from. (This method is ill-advised when using an RM CC3/4 network - see *Notes for RM CC3 and CC4 Network Users*, page 32.)

1. On the server, insert the SolidWorks 2009 DVD into the DVD drive. If the software does not start up automatically, choose *My Computer* and double click on the appropriate drive.
2. A Welcome Screen will appear. For a new installation enter your serial number (just 16 digits, ignore the last two boxes); for existing users the serial number should already be there. Click *Next*.

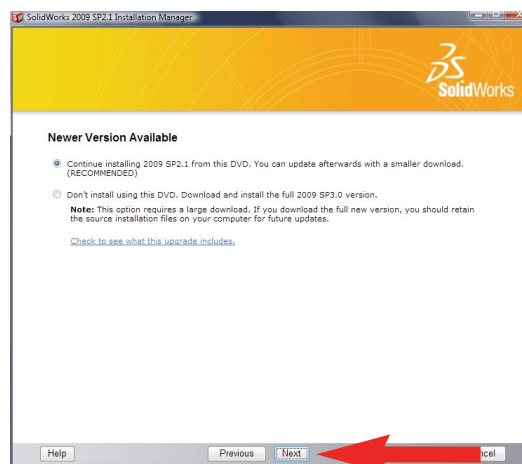


Note:

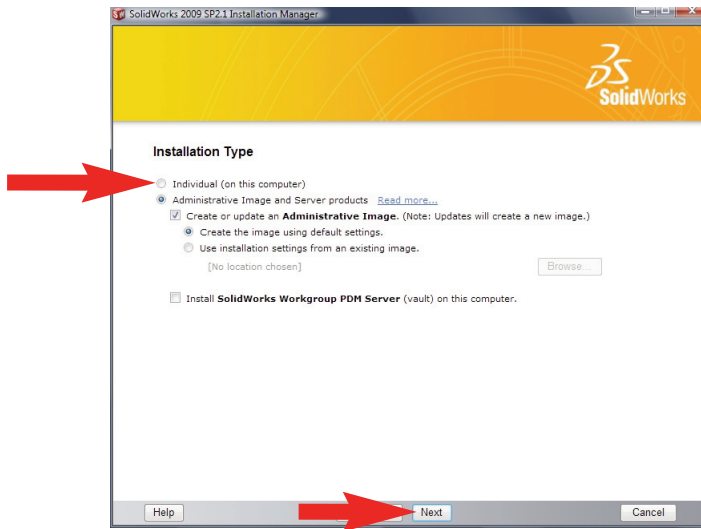
If you receive an error message about your serial number, refer to Serial Number Errors on page 42

If you have only entered a 16 digit serial number, the last 8 digits will be automatically generated and then presented to you. You should record the full 24 digit serial number then click *Next*.

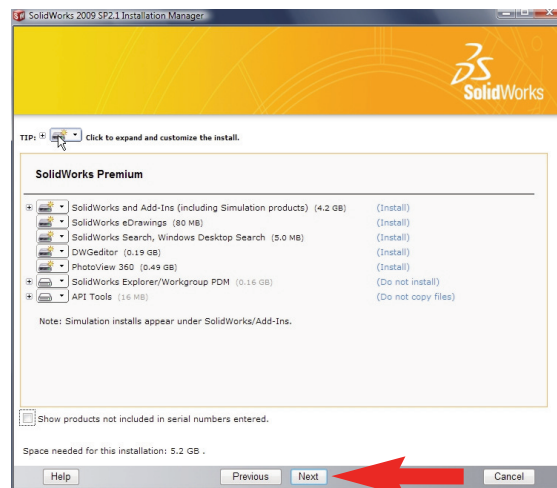
3. If a later version of the software has been detected over the internet, you will also be given the opportunity to *Download and install a new version*. As SolidWorks is such a large piece of software, you are **STRONGLY ADVISED NOT TO DOWNLOAD**, as download times for the full program can take many hours. Choose *Continue installing SolidWorks 2009 SP2.1* (the default). Click *Next*.



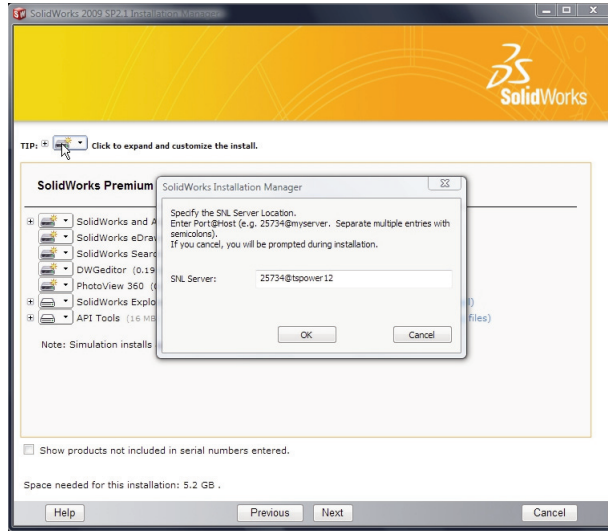
- You will be asked to choose what you would like to install. Choose *Administrative Image and Server installation*, then **ONLY** have *Create or update an Administrative Image* ticked.



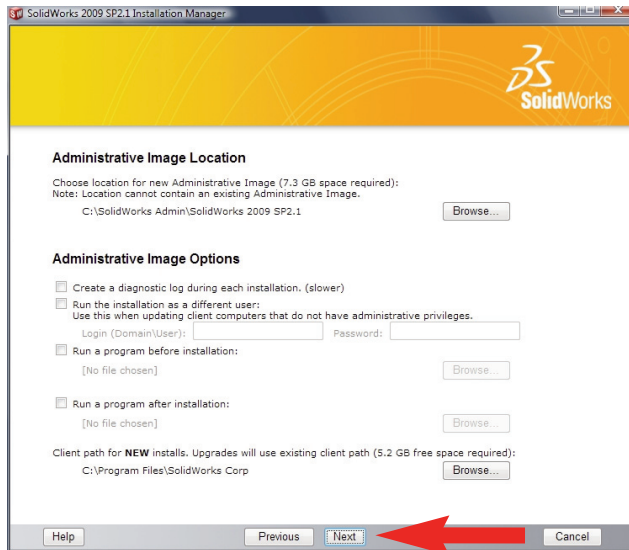
- Choose a directory in which to install the administrative image (all client computers will need access to this directory.)
- After you have clicked *Next*, the SolidWorks Setup Wizard will guide you through the installation. Accept Defaults on the following screen. Click *Next* to continue installation.

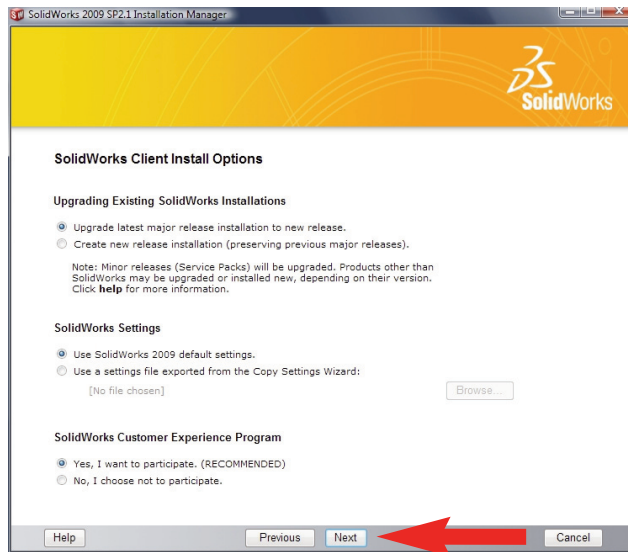


7. Enter your license server and the port number that you specified in Step 2-11, page 18. The default port is 25734. Enter it as portNumber@computerName. Then click *OK*.



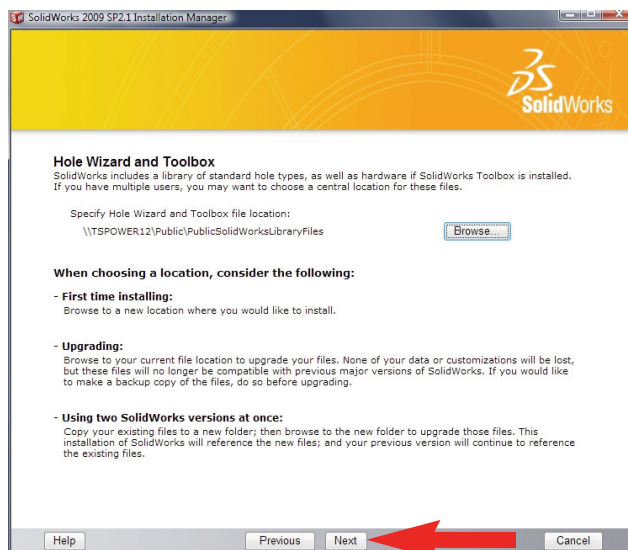
8. Over the next few screens you are required to set options for the Administrative Image. Detailed information is available for each screen by clicking on help. Additionally you can edit these settings at a later date if required (see point 12).



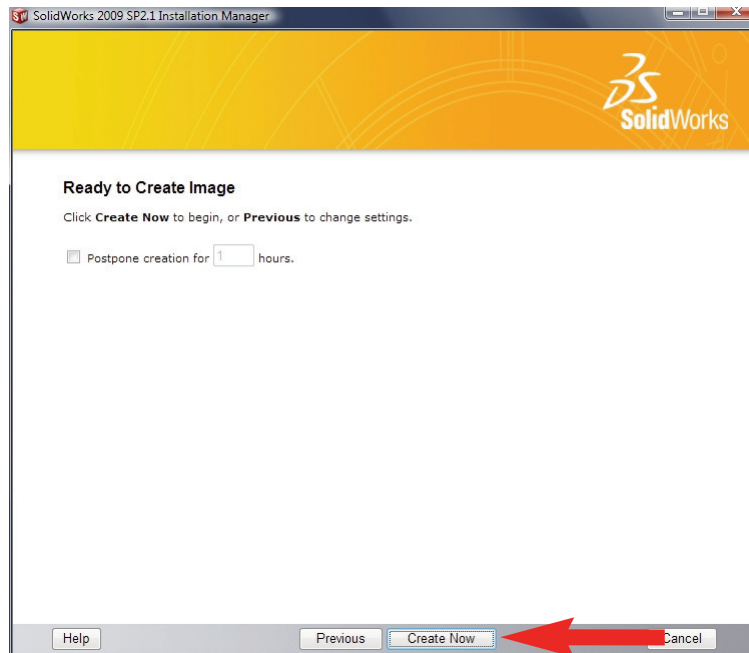


- When the prompt asks you where you would like to put *Hole Wizard and Toolbox Files*, consider the options available, further information is available by clicking on help. New users can accept the default *C:\SolidWorks Data* or choose another location if preferred. If you are an existing customer and would like to upgrade your current folder that contains the standard library files (SolidWorks Toolbox, etc), click *Browse* and find the folder with your existing standard library files then click *OK*. Existing customers can also choose to install new Hole Wizard and Toolbox Files if preferred by Browsing to a new or empty folder.

After choosing your folder, click *Next*.



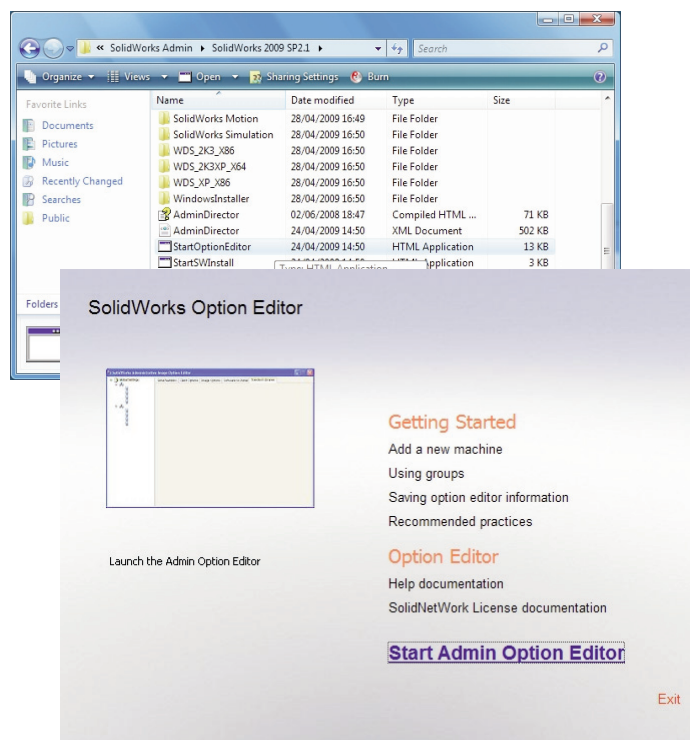
10. Ready to Install, click *Install Now*.



11. The image will now be created.

12. Once the image has been created, install SolidWorks on each client computer using the “StartSWInstall.htm” file which you will find on the server within the directory you have just created.

N.B. The options chosen on the previous screens including Client Install Options, SolidWorks settings, Administrative Image Location, Image options etc. can be changed at any time using the Admin Option Editor. If you wish to do this, navigate to the folder where you made the image, find the html application file named *StartOptionEditor* and double click it. Click on ‘*Start Admin Option Editor*’.



Notes for RM CC3 and CC4 Network Users

IMPORTANT - ALL USERS

In order to run SolidWorks successfully on a RM CC3 or CC4 Network, it may be necessary to edit the RM Software Restriction Settings. It has been found that a problem occurs if the RM network permissions do not let non-admin users copy a temporary licence file to c:\docs & settings\username\local settings\temp.

To allow this file to be written do the following:

1. Open RM Management Console
2. *For CC3:* Open *Configuration Settings* folder and click on *Software Restriction Settings*.
For CC4: Choose *Software > Software Restriction Policies*.
3. Ensure that *Path Rules* is selected.
For CC3: Right click anywhere in the right-hand pane and select *Add new path rule* from the pop-up menu.
For CC4: Click *Add* in the top right hand corner.
4. In the *Path:* box type the following:
%userprofile%\local settings\temp\solidworkslictemp.*
5. Ensure that *Allow files in this path to be run* is selected then enter a meaningful description.
6. Click *OK* to create the new rule then reboot the workstation to apply the new GPO.
7. SolidWorks should now run for all levels of users.

A special thank you to Mr Ian Munro, ICT Manager at Simon Balle School in Hertfordshire who discovered this.

INSTALLATION

Network installation can be carried out as described in this user guide provided *Method 1 - Installation from DVD* is used.

Unfortunately, due to the installation restrictions within an RM CC3 or CC4 Network, you are advised not to use *Method 2 - Create One Step Installer and install from this*.

For those who wish to install the software using msi packages, we are very grateful to Mr Ian Liverton at Beths Grammar School in Kent, who successfully installed SolidWorks 2008 Education Edition on their RM CC3 Network, and, more recently, SolidWorks 2009 Education Edition on their RM CC4 Network. He has provided us with the following notes (some of which have been adapted after consultation with RM):

Setting Up the Pre-requisite Microsoft Packages

SolidWorks 2009 requires other packages to be available. These are the Microsoft Visual C++ 2005 Runtime, Microsoft .net Framework version 3 or higher and Microsoft VSTA 2005 (Visual Studio Tools for Applications). The first two will usually have already been installed under CC4. If all three are already installed on all your computers, then please proceed to *Creating the Main SolidWorks Package*, page 34.

The following details how to obtain the Microsoft.net Framework 3.5 from RM. It also details how to make the other two Microsoft packages if you are unable to obtain them from RM.

Microsoft .net Framework 3.5

If you do not already have it, the Microsoft .net Framework 3.5 package can be obtained from RM. Logon to the RM Support website and load article DWN1460168 from the knowledge library. Follow the instructions provided.

Microsoft Visual C++ 2005 Runtime

To make a package for Microsoft Visual C++ 2005 Runtime:

- Insert the SolidWorks DVD
- Browse to DVD then PreReqs\VCRedist\vc_redist_x86.exe
- Copy this file to any temporary folder, eg., **C:\temp**
- Create a new temporary folder, eg., **C:\temp\VCRedist**
- Open up the command prompt (*Start > Run > cmd*, or in Vista *Start > Start Search*) and type:
C:\temp\vc_redist_x86.exe /C
- Browse to the new folder you created , eg., **C:\temp\VCRedist**
- Open RM Application Wizard
- Select *Manage a Windows Installer Package* then click *Next*.
- Select *Add an existing Windows Installer Package* then click *Next*.
- Enter a name and description as follows:
Name: **Microsoft Cplus plus 2005 Redistributable**
Description: Microsoft Cplusplus redistributable (sourced from SolidWorks 2009 Install DVD)
- Under *Package file (MSI) location*, browse to **C:\temp\VCRedist\vc_redist.msi** then click *Next*

Microsoft VSTA (Visual Studio Tools for Applications)

To make a package for Microsoft VSTA:

- Open RM Application Wizard
- Select *Manage a Windows Installer Package* then click *Next*.
- Select *Add an existing Windows Installer Package* then click *Next*.
- Enter a name and description as follows:
Name: **Microsoft VSTA 2005 Redistributable**
Description: Microsoft VSTA redistributable (sourced from SolidWorks 2009 Install DVD)
- Under *Package file (MSI) location*, browse to the SolidWorks DVD, then PreReqs\VSTA\vsta_aide.msi, then click *Next*

Creating the Main SolidWorks Package

On any machine:

- Insert the DVD
- Open a command prompt by going to *Start>Run>cmd* (or in Vista *Start>Start Search*). Run the following commands:
 - o *<drive letter>:*
 - o *cd sww\data*
 - o *msiexec /a English_i386_SolidWorks.msi*
- This will launch a wizard
- Click *Next*
- Select *SolidWorks Office Premium*, click *Next*
- Enter the serial number, click *Next*
- Enter a path (eg., *Q:\Applications\SolidWorks 2009*) and click *Install*
- The data will then be copied to the folder (this will take about 30 mins)
- When this has finished, click *Next* to close the wizard and return to the command prompt.

Run the following commands filling in your own details for the items in red (ie., serial number, port number and computer name that you specified in step 2-11, page 18):

(N.B. A fuller explanation of each command can be found by visiting www.techsoft.co.uk and clicking on the following links: *Software > SolidWorks > Customer Support > SolidWorks Installation and Administration Overview > Installation (Deploying Multiple Installations) > Command Prompt Deployment > SolidWorks feature (ADDLOCAL parameter) or > SolidWorks global (other parameters)*)

- o *Q:*
- o *cd Applications\SolidWorks 2009*
- o *SwCreateMST.exe English_i386_SolidWorks.Msi INSTALLDIR="C:\Program Files\SolidWorks" SOLIDWORKSSERIALNUMBER="9710 XXXX XXXX XXXX" ADDLOCAL=English,SampleFiles,Manuals,RealViewGraphicsdisplay,SolidWorks,FeatureWorks,InstantWebsite,PhotoWorksRender,ScanTo3D,SolidWorksAnimator,SolidWorksDesignChecker,SolidWorksRoutedsystems,SolidWorksToolbox,SolidWorksUtilities,TolAnalyst,CircuitWorks,DWGPartner,CoreSolidWorksTaskScheduler,ExampleFiles,HelpFiles,Intel_Modules_AgeiaX86 ENABLEPERFORMANCE=0 INSTALLWDS=0 SERVERLIST=25734@ComputerName OFFICEOPTION=3*

Note you will need to change 25734@ComputerName to your own port number and computer name that you specified in step 2-11, page 18.

- This will create an *English_i386_SolidWorks.mst* file in *Q:*. Move this file to *Q:\Applications\SolidWorks 2009*
- For CC3:
Edit the file *Q:\Applications\SolidWorks 2009\SolidWorks 2009.ini* and add to the end of the file the lines:

```
WITransform=English_i386_SolidWorks.mst
Dependencies=Microsoft VSTA 2005 Redistributable, Microsoft Cplus plus 2005 Redistributable
```

For CC4:

- In *Q:\Applications\SolidWorks 2009* create a file called *SolidWorks 2009.ini* with the following content:

```
[Package]
WIPackage=English_i386_SolidWorks.msi
Description=Package for SolidWorks 2009 SP2.1
OS=5.WS
WITransform=English_i386_SolidWorks.mst
Dependencies=Microsoft VSTA 2005 Redistributable, Microsoft Cplus plus 2005 Redistributable
```

(*Microsoft VSTA 2005 Redistributable, Microsoft Cplus plus 2005 Redistributable* assumes the use of the packages created on previous pages - adapt as appropriate).

- If this is a new install, in RM Management Console:

For CC3:

- o Update the package list
- o Open the *Configuration Settings* folder
- o Go to *Software Restrictions Settings*
- o Ensure that the *Path Rules* radio button is selected, then right-click anywhere in the right-hand pane and select *Add New Path Rule* from the pop-up menu
- o In the *Path* box type:
- o Ensure that the *Allow files in this path to be run* radio button is checked, and enter a meaningful description
- o Click *OK* to apply the rule

For CC4:

- o Go to *Software > Software Restriction Policies*
- o Ensure that the *Path Rules* radio button is selected.
- o Click *Add* in the top right hand corner
- o In the *Path* box type:
- o Ensure that the *Allow files in this path to be run* is selected in the drop down list, and enter a meaningful description.
- o Click *OK* to apply the rule

- For all installs, in RM Management Console:

For CC3:

- o Update the package list

For CC4:

- o Go to *File > Import > Package*
- o Choose *Community Connect 3 Package*
- o Click *Browse*
- o Select the *SolidWorks 2009.ini* you just created
- o Click *Open*
- o Click *OK*. (*Be patient- the package may take some time to import*).

Creating the DWGEditor and eDrawings Packages

DWGEditor

On any station:

- Insert the DVD
- Open a command prompt by going to *Start>Run>cmd* (or in Vista *Start>Start Search*). Run the following commands:
 - o *<drive letter>:*
 - o *cd DWGeditor*
 - o *msiexec /a DWGeditor.msi*
- This will launch a wizard. Click *Next*
- Enter a path (eg., *Q:\Applications\SolidWorks DWGEditor 2009*) and click *Install*
- The data will then be copied to the folder (this will take a few mins)
- When it has finished, close the wizard
- For CC3:
 - Edit the file *Q:\Applications\SolidWorks DWGEditor 2009\SolidWorks DWGEditor 2009.ini* and add to the end of the file the lines:

```
Addcommand=INSTALLDIR="C:\Program Files\DWGEditor" DWGASSOC=1 LICENCETYPE=2
SERVERLIST=25734@ComputerName
Dependencies=SolidWorks 2009
```

For CC4:

Create the file *Q:\Applications\SolidWorks DWGEditor 2009\SolidWorks DWGEditor 2009.ini* with the following content:

```
[Package]
WIPackage=DWGeditor.msi
Description=Package for SolidWorks DWGEditor 2009
OS=5.WS
Addcommand=INSTALLDIR="C:\Program Files\DWGEditor" DWGASSOC=1 LICENCETYPE=2
SERVERLIST=25734@ComputerName
Dependencies=SolidWorks 2009
```

Note that the Addcommand line is only one line – it has been split onto two due to its length. Also you will need to change *25734@ComputerName* to your own port number and computer name that you specified in step 2-11, page 18.

- In RM Management Console:
 - For CC3:
 - o Update the package list
 - For CC4:
 - o Choose *File > Import > Package*
 - o Choose *Community Connect 3 Package*
 - o Click *Browse*
 - o Select the *SolidWorks DWGEditor 2009.ini* you just created
 - o Click *Open*
 - o Click *OK*.

eDrawings

On any station:

- Insert the DVD
- Open a command prompt by going to *Start>Run>cmd* (or in Vista *Start>Start Search*). Run the following commands:
 - o *<drive letter>:*
 - o *cd eDrawings*
 - o *msiexec /a eDrawings.msi*
- This will launch a wizard. Click *Next*
- Enter a path (eg., *Q:\Applications\SolidWorks eDrawings 2009*) and click *Install*
- The data will then be copied to the folder (this will take a few mins)
- When it has finished, disable performance logging, tell it not to launch and close the wizard
- *For CC3:*
 Edit the file *Q:\Applications\SolidWorks eDrawings 2009\SolidWorks eDrawings 2009.ini* and add to the end of the file the lines:

```
Addcommand=INSTALLDIR="C:\Program Files\eDrawings" ADDLOCAL=ALL
LOGPERFORMANCE=0 SNLSERVER=25734@ComputerName
Dependencies=SolidWorks 2009
```

For CC4:

Create the file *Q:\Applications\SolidWorks eDrawings 2009\SolidWorks eDrawings 2009.ini* with the following content:

```
[Package]
WIPackage=eDrawings.msi
Description=Package for SolidWorks eDrawings 2009
OS=5.WS
Addcommand=INSTALLDIR="C:\Program Files\eDrawings" ADDLOCAL=ALL
LOGPERFORMANCE=0 SNLSERVER=25734@ComputerName
Dependencies=SolidWorks 2009
```

Note that the Addcommand line is only one line – it has been split onto two due to its length. Also you will need to change 25734@ComputerName to your own port number and computer name that you specified in step 2-11, page 18.

- In RM Management Console:
 - For CC3:*
 - o Update the package list
 - For CC4:*
 - o Choose *File > Import > Package*
 - o Choose *Community Connect 3 Package*
 - o Click *Browse*
 - o Select the *SolidWorks eDrawings 2009.ini* you just created
 - o Click *Open*
 - o Click *OK*.

Creating the SolidWorks Simulation Packages

SolidWorks Simulation Premium

On a station you can restore:

- Insert the DVD
- Open a command prompt by going to *Start>Run>cmd* (or in Vista *Start>Start Search*). Run the following commands:
 - o *<drive letter>*:
 - o *cd cwwi\COSMOSM*
 - o *msiexec /a COSMOSM_Engish.msi*
- This will launch a wizard. Click *Next*
- Tell the wizard you will set up license configuration later. Click *Next*
- Enter a path (eg., *Q:\Applications\SolidWorks Simulation Premium 2009*) and click *Install*
- The data will then be copied to the folder (this will take a few mins)
- When it has finished, close the wizard
- For CC3:
 - Edit the file *Q:\Applications\SolidWorks Simulation Premium 2009\SolidWorks Simulation Premium 2009.ini* and add to the end of the file the lines:

```
Addcommand=INSTALLDIR="C:\Program Files\COSMOS" SOLIDWORKSDIR="C:\Program
Files\SolidWorks" SERVERLIST=25734@ComputerName
Dependencies=SolidWorks 2009
```

For CC4:

Create the file *Q:\Applications\SolidWorks Simulation Premium 2009\SolidWorks Simulation Premium 2009.ini* with the following content:

```
[Package]
WIPackage=COSMOSM_Engish.msi
Description=Package for SolidWorks Simulation Premium 2009
OS=5.WS
Addcommand=INSTALLDIR="C:\Program Files\COSMOS" SOLIDWORKSDIR="C:\Program
Files\SolidWorks" SERVERLIST=25734@ComputerName
Dependencies=SolidWorks 2009
```

Note that the Addcommand line is only one line – it has been split onto two due to its length. Also you will need to change 25734@ComputerName to your own port number and computer name that you specified in step 2-11, page 18.

- In RM Management Console:
 - For CC3:
 - o Update the package list
 - For CC4:
 - o Choose *File > Import > Package*
 - o Choose *Community Connect 3 Package*
 - o Click *Browse*
 - o Select the *SolidWorks Simulation Premium 2009.ini* you just created
 - o Click *Open*
 - o Click *OK*.

SolidWorks Flow Simulation

On any machine:

- Insert the DVD
- Open a command prompt by going to *Start>Run>cmd* (or in Vista *Start>Start Search*). Run the following commands:
 - o *<drive letter>:*
 - o *cd cww\COSMOSFloWorks*
 - o *msiexec /a i386_SolidWorksFlow_English.msi*
- This will launch a wizard. Click *Next*
- Ignore the serial number prompt and click *Next*
- Tell the wizard you will set up license configuration later. Click *Next*
- Enter a path (eg., *Q:\Applications\SolidWorks Flow Simulation 2009*) and click *Install*
- The data will then be copied to the folder (this will take a few mins)
- When it has finished, close the wizard
- *For CC3:*
 Edit the file *Q:\Applications\SolidWorks Flow Simulation 2009\SolidWorks Flow Simulation 2009.ini* and add to the end of the file the lines:

```
Addcommand=INSTALLDIR="C:\Program Files\COSMOS" SOLIDWORKSDIR="C:\Program Files\SolidWorks" SERVERLIST=25734@ComputerName
Dependencies=SolidWorks 2009, SolidWorks Simulation Premium 2009
```

For CC4:

Create the file *Q:\Applications\SolidWorks Flow Simulation 2009\SolidWorks Flow Simulation 2009.ini* with the following content:

```
[Package]
WIPackage=SolidWorksFlow_English.msi
Description=Package for SolidWorks Flow Simulation 2009
OS=5.WS
Addcommand=INSTALLDIR="C:\Program Files\COSMOS" SOLIDWORKSDIR="C:\Program Files\SolidWorks" SERVERLIST=25734@ComputerName
Dependencies=SolidWorks 2009, SolidWorks Simulation Premium 2009
```

Note that the Addcommand line is only one line – it has been split onto two due to its length. Also you will need to change *25734@ComputerName* to your own port number and computer name that you specified in step 2-11, page 18.

- In RM Management Console:
 - For CC3:*
 - o Update the package list
 - For CC4:*
 - o Choose *File > Import > Package*
 - o Choose *Community Connect 3 Package*
 - o Click *Browse*
 - o Select the *SolidWorks Flow Simulation 2009.ini* you just created
 - o Click *Open*
 - o Click *OK*.

SolidWorks Motion

On any machine:

- Insert the DVD
- Open a command prompt by going to *Start>Run>cmd* (or in Vista *Start>Start Search*). Run the following commands:
 - o *<drive letter>:*
 - o *cd cww\COSMOSMotion*
 - o *msiexec /a SolidWorks Motion.msi*
- This will launch a wizard. Click *Next*
- Insert the extended serial number you noted earlier
- Enter a path (eg., *Q:\Applications\SolidWorks Motion 2009*) and click *Install*
- The data will then be copied to the folder (this will take a few mins)
- When it has finished, close the wizard
- *For CC3:*
Edit the file *Q:\Applications\SolidWorks Motion 2009\SolidWorks Motion 2009.ini* and add to the end of the file the lines:

```
Addcommand=INSTALLDIR="C:\Program Files\COSMOS" SOLIDWORKSDIR="C:\Program
Files\SolidWorks" SERVERLIST=25734@ComputerName
Dependencies=SolidWorks 2009, SolidWorks Simulation Premium 2009
```

For CC4:

Create the file *Q:\Applications\SolidWorks Motion 2009\SolidWorks Motion 2009.ini* with the following content:

```
[Package]
WIPackage=SolidWorks Motion.msi
Description=Package for SolidWorks Motion 2009
OS=5.WS
Addcommand=INSTALLDIR="C:\Program Files\COSMOS" SOLIDWORKSDIR="C:\Program
Files\Solidworks" SERVERLIST=25734@ComputerName
Dependencies=SolidWorks 2009, SolidWorks Simulation Premium 2009
```

Note that the Addcommand line is only one line – it has been split onto two due to its length. Also you will need to change 25734@ComputerName to your own port number and computer name that you specified in step 2-11, page 18.

- In RM Management Console:
 - For CC3:*
 - o Update the package list
 - For CC4:*
 - o Choose *File > Import > Package*
 - o Choose *Community Connect 3 Package*
 - o Click *Browse*
 - o Select the *SolidWorks Motion 2009.ini* you just created
 - o Click *Open*
 - o Click *OK*.

SolidWorks Simulation

On any machine:

- Insert the DVD
- Open a command prompt by going to *Start>Run>cmd* (or in Vista *Start>Start Search*). Run the following commands:
 - *<drive letter>:*
 - *cd cww\COSMOSWorks*
 - *msiexec /a SolidWorks Simulation.msi*
- This will launch a wizard. Click *Next*
- Insert the extended serial number you noted earlier
- Enter a path (eg., *Q:\Applications\SolidWorks Simulation*) and click *Install*
- The data will then be copied to the folder (this will take a few mins)
- When it has finished, close the wizard
- *For CC3:*
 Edit the file *Q:\Applications\SolidWorks Simulation 2009\SolidWorks Simulation 2009.ini* and add to the end of the file the lines:

```
Addcommand=INSTALLDIR="C:\Program Files\COSMOS" SOLIDWORKSDIR="C:\Program Files\Solidworks" SERVERLIST=25734@ComputerName
Dependencies=SolidWorks 2009, SolidWorks Simulation Premium 2009
```

For CC4:

Create the file *Q:\Applications\SolidWorks Simulation 2009\SolidWorks Simulation 2009.ini* with the following content:

```
[Package]
WIPackage=SolidWorks Simulation.msi
Description=Package for SolidWorks Simulation 2009
OS=5.WS
Addcommand=INSTALLDIR="C:\Program Files\COSMOS" SOLIDWORKSDIR="C:\Program Files\Solidworks" SERVERLIST=25734@ComputerName
Dependencies=SolidWorks 2009, SolidWorks Simulation Premium 2009
```

Note that the Addcommand line is only one line – it has been split onto two due to its length. Also you will need to change 25734@ComputerName to your own port number and computer name that you specified in step 2-11, page 18.

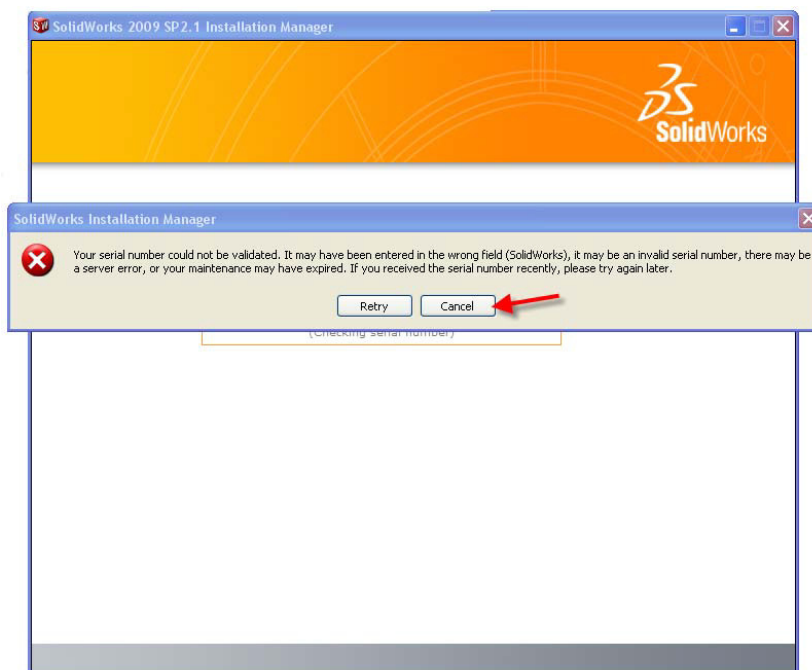
- In RM Management Console:
 - For CC3:*
 - Update the package list
 - For CC4:*
 - Choose *File > Import > Package*
 - Choose *Community Connect 3 Package*
 - Click *Browse*
 - Select the *SolidWorks Simulation 2009.ini* you just created
 - Click *Open*
 - Click *OK*.

FURTHER NOTES AND TROUBLESHOOTING

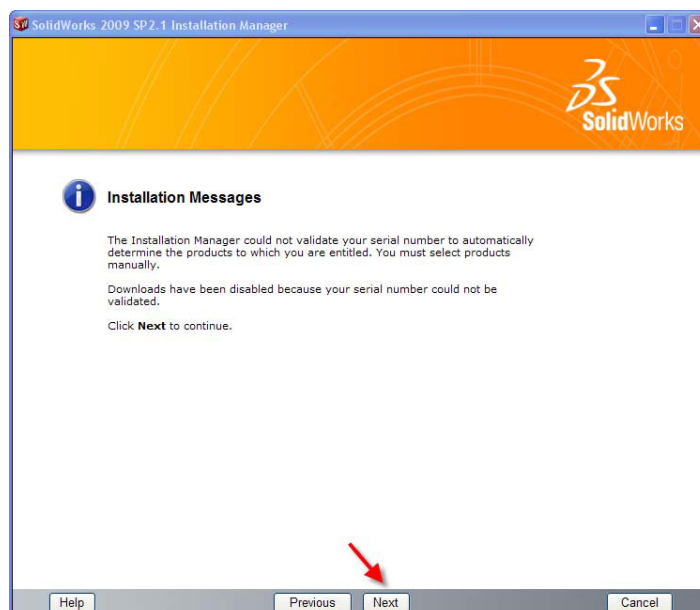
1. **Serial Number Errors**
2. **Network Licenses with Firewalls**
3. **Dongle Installation Problems**
4. **Administrative Images**
5. **Services/Processes still running at install time**

1. Serial Number Errors

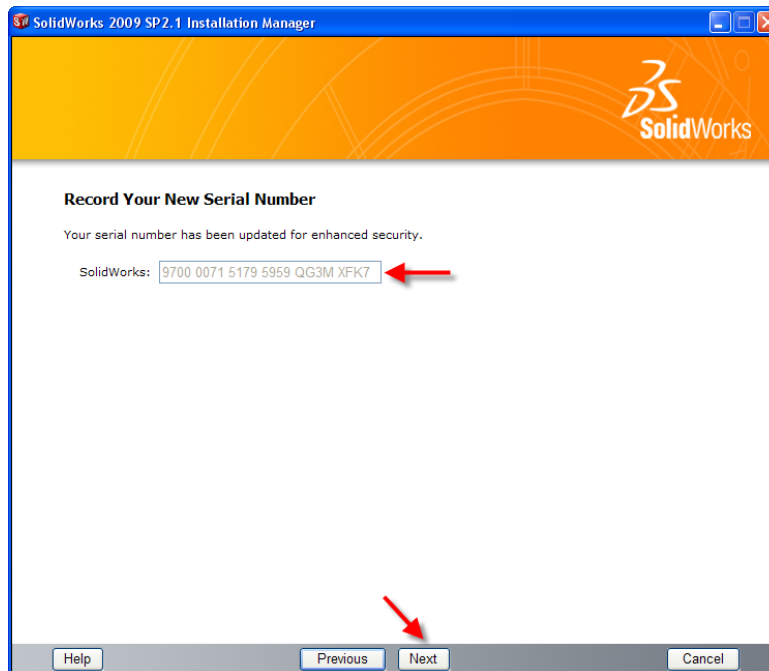
If you get a prompt box saying your serial number is not a SolidWorks serial number, *ignore this message* and click **CANCEL**



Then click **Next**



Please record your new Serial Number. Click *Next* to continue installing SolidWorks.



2. Network Licenses with Firewalls

If your computer uses a firewall, you will need to open two ports on the server to allow clients to connect and obtain licenses. The default ports are 25734 and 25735 (see page 18). Set up the ports as follows:

- **Firewall software.** With Internet firewall software, you must add two ports to your firewall exceptions list. See your System Administrator.
- **Windows Firewall.** If you use Windows Firewall, you must modify ports on the license server to allow clients to connect and obtain licenses.

To modify ports in Windows Firewall:

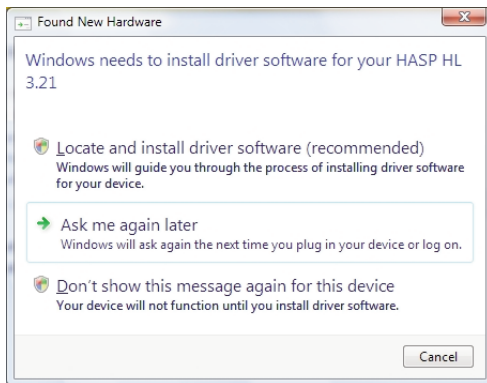
1. Go to *Start>Run* and type in *firewall.cpl*.
2. If you don't see the *Exceptions tab* you may need to click on *Allow a program through windows firewall* or *change settings*, depending on the version of Windows in use.
3. Click on the *Exceptions tab*, then click on *Add port*
4. Type a name, (for example, SNL-inport) and your port number (for example, 25734)
5. Select the TCP protocol and click OK.
6. Repeat the process for the second port and then close the Windows Firewall window.

3. Dongle Installation Problems

USB dongle - when to insert and device drivers.

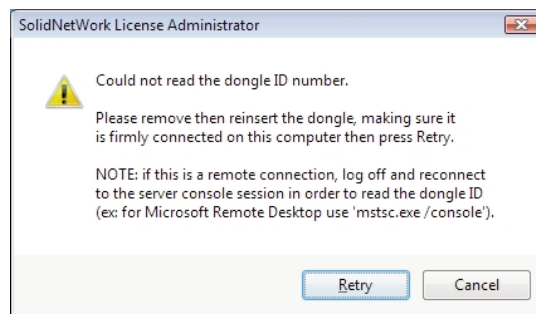
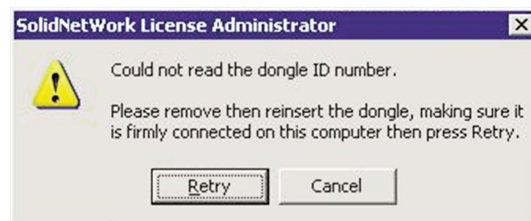
When you insert the USB dongle for the first time, Windows will detect the device and may try to install drivers for the device. You do not want to install drivers for the USB dongle and should choose not to, or stop Windows from continuing, as they are installed by SolidWorks Installation Manager part way through the installation. It is for this reason that we recommend not plugging in the USB dongle until the SolidWorks Installation Manager prompts you for it.

In this example (Windows Vista) you should click on Ask me again later, you will not be asked again later unless there is a problem with the installation.



Problems reading dongle

Some users have reported that a message is given during the process of running through the SolidWorks Network License Wizard at the point of reading the SNL file, indicating that the dongle is not recognized or the dongle ID cannot be read (or similar).



This problem most frequently occurs where a remote desktop application such as Remote Desktop Connection, VNC, Symantec pcAnywhere, is being used. If this is the case, installing DIRECTLY on the server should solve the problem.

The problem can also occur if the USB dongle driver software has not installed correctly. If this is the case, you should click *OK* to complete the SolidNetwork License Wizard, then un-install and re-install the dongle driver software manually as follows:

To remove the dongle driver software:

Either:

Use Device Manager and under USB devices remove items with the name HASP, FLEX or Aladdin.

Or:

Open a DOS command prompt and type:

```
cd C:\Program Files\SolidWorks SolidNetWork License Manager\setup\i386
```

Press [ENTER] to change the prompt into that directory, then type `haspdinst -r` and press [ENTER]. This will remove the driver.

To re-install the dongle driver software:

Open a DOS command prompt and type:

```
cd C:\Program Files\SolidWorks SolidNetWork License Manager\setup\i386
```

Press [ENTER] to change the prompt into that directory, then type `haspdinst -i`

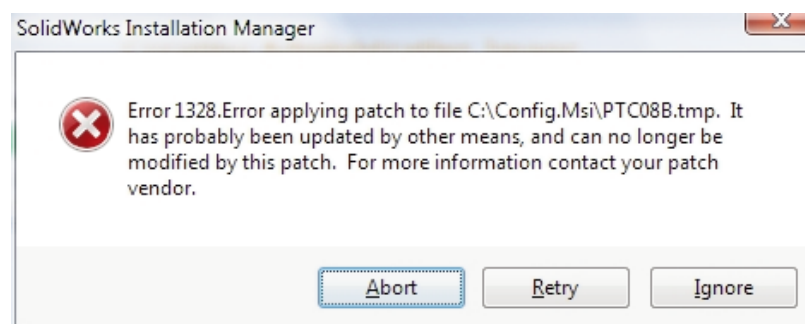
N.B. In some cases the previous command will result in an 'INOPERABLE BATCH FILE' error, in which case you should instead type: `hinstall -i` and press [ENTER].

When the operation completes successfully the LED on the USB dongle will light.

In a few cases it has been found that Window's DEP (Data Execution Settings) can be another reason for communication problems between the SolidWorks Network License software and the dongle. The settings should be configured as follows:

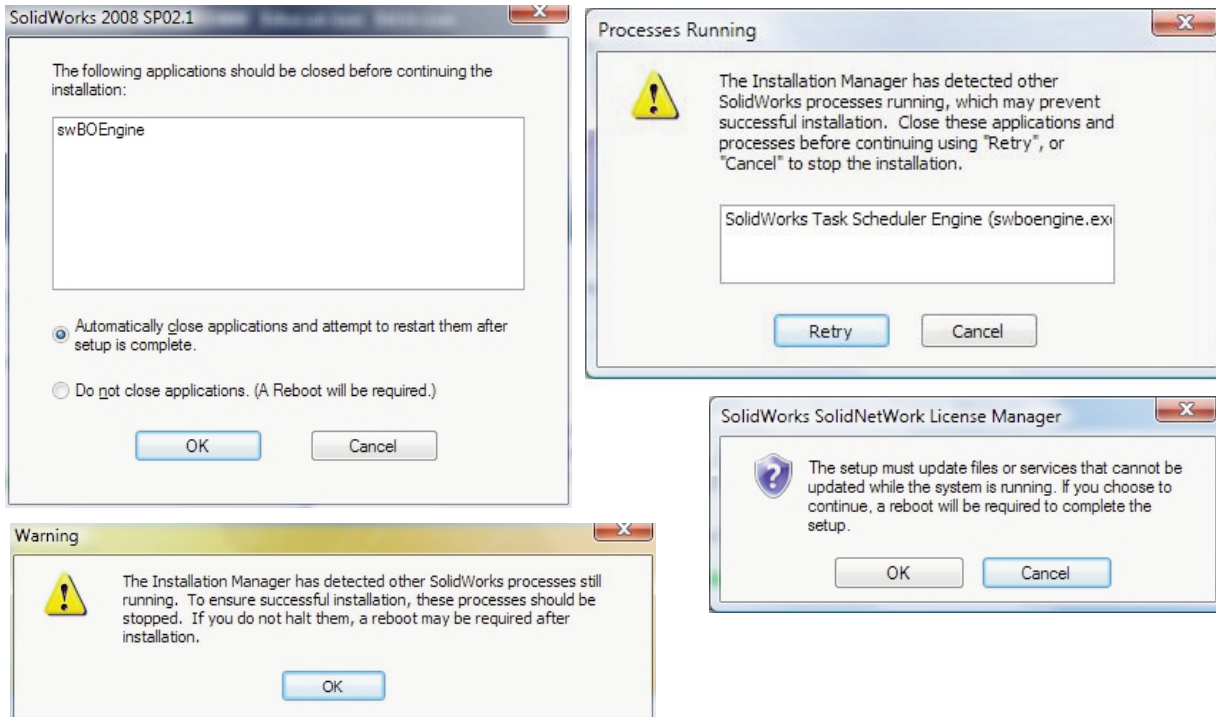
Choose *Start > Control Panel > System > Advanced > Performance > Settings > Data Execution Prevention (DEP)*, select the second radio button and add `sw_d.exe`, `swlmwiz.exe` and `lmgrd.exe` to the exception list.

4. Administrative Images



You may experience this error when creating admin images. It is related to Microsoft components that are installed with SolidWorks. You should choose to *Ignore* the error, which usually occurs because you have a more recent version of a software component than the installer is trying to use.

5. Services/Processes Still Running at Install

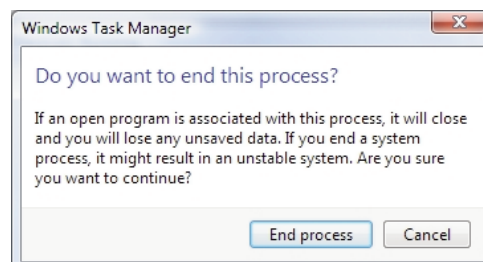
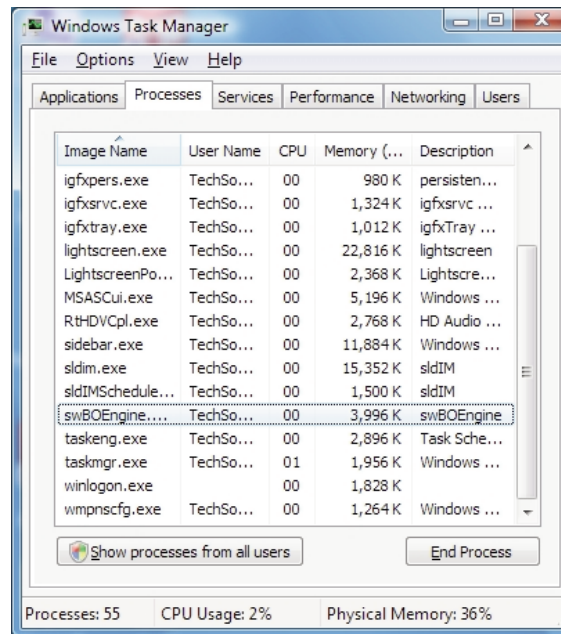


In the event of receiving an error message similar those above, you may need to stop the swBOEngine process manually. To do this press CTRL + ALT + DELETE and then click on *Task Manager* or *Start Task Manager*.

Select *swBOEngine.exe* in the *Processes* list

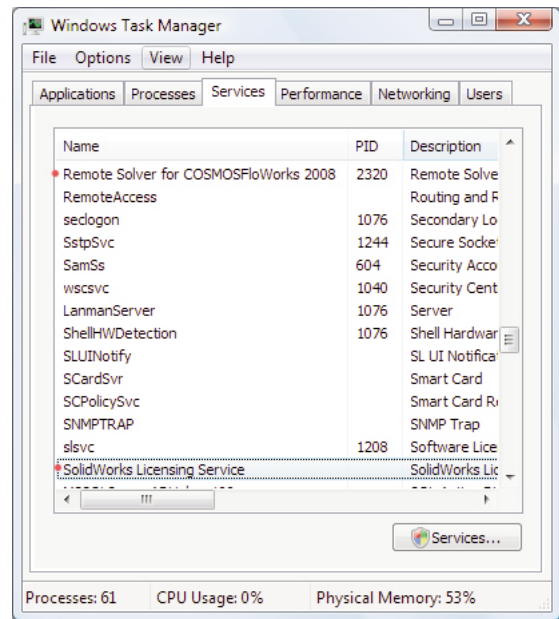
Click on the *End Process* button.

At the next message box, click the *End Process* button



You may also need to stop any SolidWorks related services, click on the *Services* tab in task manager. To stop a running service, *select the service in the list*, then *right click on it*, when the menu pops up click on *Stop Service*. The following services may be running and causing problems with the installation:

- SolidWorks Licensing Service
- Remote Solver for COSMOSFloWorks 2008





Published by:-
TechSoft UK Limited
Falcon House
Royal Welch Avenue
Bodelwyddan
Denbighshire LL18 5TQ

Tel : 01745 535007
Fax : 01745 535008
Web site : www.techsoft.co.uk
Email : email@techsoft.co.uk